

PROPOSED CONSTRUCTION OF 8 NO. CLASSROOMS AT ILUYA PRIMARY SCHOOL

ITEM	GROUND FLOOR	DESCRIPTION	QTY	UNIT	RATE	AMOUNT
	ELEMENT 01					
	SUBSTRUCTURE					
	<u>Site clearance(All provisional)</u>					
A		Clear site of all bushes, shrubs and small trees of girth not exceeding 600mm diameter measured 1 metre from ground level and dispose all the arising materials.	594	SM	60	35,640
B		Soil wheel and deposit on site and later spread as directed by the project manager.				
C		Excavate from stripped level to reduce level depth not exceeding 1500m.	90	CM	50	4,500
		<u>Excavation to column bases</u>				
D		Excavate for square columns bases depth not exceeding 1.5metres and dispose off the excavated material as directed.	178	CM	200	35,600
		<u>Excavation to foundation trenches</u>				
E		Extra-over excavation for excavation in rock irrespective of class and dispose the arising materials away from site at distance not less than 100 metres.	414	CM	200	82,800
F		Excavate for foundation strip from stripped, of depth not exceeding 1.5m and dispose off as directed by the P.M	118	CM	350	41,300
		<u>Form work to column bases</u>				
G		Soft sawn celcured timber form work to column bases, girth exceeding 200mm but not exceeding 300mm.	172	CM	200	34,400
			137	SM	300	41,100
TOTAL CARRIED TO COLLECTION						275,640

PROPOSED CONSTRUCTION OF 8 NO. CLASSROOMS AT ILUYA PRIMARY SCHOOL

ITEM	DESCRIPTION	QTY	UNIT	RATE	AMOUNT
A	<u>Form work to foundation strip</u> Softwood sawn celcured timber formwork of girt exceeding 150mm but not exceeding 255mm.	to			
	<u>Reinforcement to column bases (Provisional)</u>	76	SM	450	34,200
B	12mm high tensile steel bars including tying wires, spacer blocks and hooks to BS 4461.	1095	KG	250	273,750
	<u>Reinforcement to foundation strip (provisional)</u>				
C	10mm diameter, ditto links				
D	8mm diameter, ditto	650	KG	173	112,450
	<u>Concrete works</u>				
	<u>Mass concrete class 10-15mm(1:3:6) aggregate in:-</u>	225	KG	168	37,800
E	50mm thick blinding under strip foundation				
F	Ditto in column bases	115	SM	550	63,250
	<u>Class 20/20mm aggregate, mix (1:2:4) Vibrated concrete to:-</u>	82	SM	550	45,100
G	Column bases				
H	Foundation strip	42	CM	13000	546,000
I	<u>Formwork to stub column</u> Softwood sawn celcured timber formwork to column	23	CM	13000	299,000
	<u>Reinforcement to stub column (All provisional)</u>	95	SM	350	33,250
J	16mm diameter high tensile square steel bars to BS 4461 including tying wires, hooks and spacer blocks all in position.				
	Ditto but 12mm bars (circular columns)	717	KG	159	114,003
	<u>Ditto but 8mm bars</u>	144	KG	159	22,896
	<u>Class 20/20mm aggregate, mix (1:2:3) Vibrated concrete to:-</u>	233	KG	168	39,144
	Stub column	6	CM	13500	81,000
	<u>Expansion joint</u> 25mm Thick flexell in expansion joint	8	SM	220	1760
	22 by 12 Mastic sealant	64	LM	250	16,000
TOTAL CARRIED TO COLLECTION					1,719,603

PROPOSED CONSTRUCTION OF 8 NO. CLASSROOMS AT ILUYA PRIMARY SCHOOL

ITEM	DESCRIPTION	QTY	UNIT	RATE	AMOUNT
A	<u>Foundation walling</u> 200mm thick hand dressed approved natural stone walling reinforced with 20mm thick hoop iron at every second course and laid with (1:3) cement sand mortar				
B	<u>Hardcore filling</u> 300mm thick approved hardcore filling consolidated in 150mm layers and well compacted.	229	SM	1000	229,000
C	<u>Murram Blinding</u> 75mm thick approved hardcore filling consolidated two layers and well compacted	352	SM	480	151,360
D	Prepare and apply 'Gladiator TC' (organophosphates chlorpyritos) coverage 8SM per litre as 'HIGH CHEM LTD' or other equal and approved.	352	SM	150	52,800
E	1000 Gauge Damp Proof membrane with lap allowance of 200mm.	352	SM	120	42,240
F	Mesh fabric reinforcement with 150mm laps allowance (allowance for laps) reference A 142 to BS 1483	352	SM	150	52,800
G	<u>Formwork to edges of slab</u> Soft sawn timber for formwork to edges of ground floor exceeding 75mm but not exceeding 150mm	352	SM	270	95,040
		103	LM	100	10,300
Total carried to Collection					633,540

PROPOSED CONSTRUCTION OF 8 NO. CLASSROOMS AT ILUYA PRIMARY SCHOOL

ITEM	DESCRIPTION	QTY	UNIT	RATE	AMOUNT
	<u>Class 20/20mm aggregate, mix(1:2:4)</u> <u>Vibrated concrete to:-</u>				
A	150mm thick Class 20/20mm reinforced vibrated concrete to ground floor slab	352	SM	1900	668,800
	<u>Plinth treatment</u>				
B	12mm thick render (400mm girth) of cement to sand (1:4) to receive bituminous paint (M.s)	62	SM	300	18,600
C	Prepare and apply one undercoat and two finishing coats of black bituminous paint	62	SM	250	15,500
	<u>Plunking and strutting</u>				
D	Allow for plunking and strutting to sides of excavations		ITEM	10,000	10,000
	<u>Removal of water</u>				
E	Allow for keeping of the excavation free from mud and all water including spring and running water by pumping pailing or any other approved means		ITEM	10,000	10,000
	<u>Disposal</u>				
F	Loads surplus excavated material and cart away from site distance not less than 500m	195	CM	90	17,550
	<u>Fillings</u>				
G	Return fill in and ram selected excavated materials around foundation	390	CM	90	35,100
	<u>Paving slab</u>				
I	600 by 600 by 50mm thick precast concrete slabs on including 50mm sand bed and 100mm thick compacted hardcore sub-base to fall, jointing and pointing in cement sand mortar(1:3) and compacted	124	SM	700	86,800
TOTALS CARRIED TO MAIN SUMMARY					862,350

PROPOSED CONSTRUCTION OF 8 NO. CLASSROOMS AT ILUYA PRIMARY SCHOOL

ITEM	DESCRIPTION	QTY	UNIT	RATE	AMOUNT
	Brought forward from page SP/1				
	Brought forward from page SP/2				275,640
	Brought forward from page SP/3				1,719,603
	Brought forward from page SP/4				633,540
					862,350
Total for Element No.01 Substructure Carried to Summary page					3,491,133 3,031,678

PROPOSED CONSTRUCTION OF 8 NO. CLASSROOMS AT ILUYA PRIMARY SCHOOL

ITEM	DESCRIPTION	QTY	UNIT	RATE	AMOUNT
ELEMENT NO. 02					
SUPERSTRUCTURE FRAME					
COLUMNS					
A	<u>Reinforced (Provisional)</u> 16mm high high tensile reinforcing steel bars including spacers, hooks and tying wire all to position to BS 4461	1195	KG	152	181,640
B	12mm diameter ditto (circular)				
C	8mm diameter ditto	240	KG	149	35,760
Formwork to:-					
D	Softwood sawn timber formwork to columns	413	KG	160	66,080
E	Vibrated reinforced concrete (1:2:4) / 20-20mm aggregate in columns	186	SM	400	74,400
		12	CM	12500	150,000
Main and intermediate beams					
Reinforcement (All Provisional)					
F	20mm high tensile reinforcing steel bars including spacers, hooks and tying wires to position	855	KG	150	128,250
G	16mm diameter bar	1984	KG	155	307,520
H	12mm diameter bar	508	KG	155	78,740
I	8mm diameter bar	930	KG	160	148,800
Main intermediate Beams Concrete works					
J	Class 20/20mm aggregate, mix (1:2:4) Vibrated and reinforced concrete beams	38	CM	12000	456,000
Formwork to:-					
K	Softwood cypress sawn celcured timber formwork to sides and soffit of ring beam	440	SM	400	176,000
Walling					
200mm Thick Walling					
L	200mm thick medium dressed one side natural stone walling reinforced with 20mm hoop iron at every second course laid with (1:4) cement sand mortar	258	SM	1800	464,400
Water proofing					
M	200mm wide bituminous felt damp proof course bedded in (1:3) cement sand mortar	127	LM	150	19,050
TOTAL CAARIED DOWN					2,286,640

PROPOSED CONSTRUCTION OF 8 NO. CLASSROOMS AT ILUYA PRIMARY SCHOOL

ITEM	DESCRIPTION	QTY	UNIT	RATE	AMOUNT
A	<u>Suspended Floor slab</u> <u>Reinforcement (Provisional)</u> 12mm high tensile square reinforcement steel bars, including tying wires and spacer blocks all to position	2,880	KG	149	429,120
B	Ditto to D10mm <u>Formwork to edges of slab</u>	2,000	KG	163	306,000
C	Softwood sawn formwork to edges of floor slab exceeding 75mm but exceeding 150mm	103	LM	90	9,270
D	Sawn softwood formwork to soffits of suspended floor slab	352	SM	380	133,760
E	100mm diameter timber poles 3000mm long for props at 800mm c/c	590	NO	150	88,500
EF	<u>Concrete Works</u> <u>Vibrated reinforced concrete class 20-20mm aggregate (1:2:4) in:-</u> 150mm thick suspended slab	352	SM	180	633,600
TOTAL COLLECTION					1,600,250
<u>COLLECTION</u>					
Brought forward page from page SP/6					2,240,781
Brought forward from above					1,600,250
Total for Element No. 02 Superstructure Frame Carried to Summary					3,841,031

PROPOSED CONSTRUCTION OF 8 NO. CLASSROOMS AT ILUYA PRIMARY SCHOOL

ITEM	DESCRIPTION	QTY	UNIT	RATE	AMOUNT
	ELEMENT NO. 04 Windows				
	<u>Galvanized steel casement windows (supply and fix the following windows casement frames complete with hinges, stars, fasteners, permanent vent with mosquito gauze and sheet good assembled and fixed to opening including cutting and pinning lugs to concrete or blockwork surround and bedding frame in cement and sand mortar (1:3) glazing and grill (m.s) to:-</u>				
A	1500 × 1200mm frame all welded joints ground smooth and finished with red oxide coat with two side hanglights; one fixed bottom light and two fixed light	12	NO	10,000	120,000
B	Window size 1500 × 1000mm precast vent blocks fixed to approval	8	SM	1200	9600
	Burglar proofing				
	<u>Supply and fix openings galvanized mild steel grill framed 40×25×3 mm thick R.H.S Including pinning lugs to concrete or blockwork and bedding frame in cement sand (1:4) mortar to:-</u>				
C	1500×1200mm with 40×25×3mm burglar proofing in varied approved patterns, curves	20	NO	900	18,000
	Glazing				
D	6mm thick clear glass fixed to metal frame(M.S) with putty in panes exceeding 0.50m2 but not exceeding 1.0m2	23	SM	1200	27600
	VENT BLOCKS				
	Supply and fix 450×250 precast concrete vent blocks jointed in cement sand mortar	15	SM	450	6750
	Total Carried to collection				181,950

ITEM	DESCRIPTION	QTY	UNIT	RATE	AMOUNT
A	<u>Window Cill</u> 75mm thick x 250mm wide precast concrete (1:2:4) weathered, throated and grooved and bedded on 200mm thick walls including heavy duty weld mesh and building in concrete blockwork	32	LM	665	21,280
B	<u>Painting and Decoration</u> Prepare and apply one undercoat and two finishing coats of first quality gloss oil paint both internal and external surface of windows	46	SM	200	9,200
Carried to Collection					
<u>COLLECTION</u>					30,480
	Brought forward page from page SP/09				181,950
	Brought forward from above				30,480
Total for Element No. 04 Windows Carried to Summary					212,430

PROPOSED CONSTRUCTION OF 8 NO. CLASSROOMS AT ILUYA PRIMARY SCHOOL

ITEM	DESCRIPTION	QTY	UNIT	RATE	AMOUNT
	Element No. 05				
	Floor Finishes				
A	24mm thick cement sand screed (1:3) mortar backing troweled rough and hard to receive terrazzo	352	SM	300	105,600
B	15mm thick terrazzo chipings(1:3) mortar troweled smooth graded and polished to approval.	352	SM	1750	616,000
C	Plastic dividing strips	608	LM	45	27360
D	100× 25mm thick terrazzo skirting	176	LM	250	44,000
	Plaster				
E	12mm thick cement lime sand (1:1:6) plaster trowelled smooth to receive paint(m.s), internal walls	480	SM	250	120,000
F	Ditto but render to key in external walls	158	SM	90	14,220
G	Ditto to columns and beams	80	SM	90	7200
	Painting and decoration				
H	Prepare and apply one undercoat and two finishing coats of first grade silk matt plastic emulsion paint to internal walls	480	SM	200	96,000
I	Prepare and apply one undercoat and two finishing coats of first grade silk matt plastic emulsion paint to internal walls	158	SM	200	31600
	Soffits of suspended floor slab				
L	12mm thick plaster troweled smooth to receive paint(m.s)	335	SM	375	125,625
M	Prepare and apply one undercoat and two finishing coats of first grade silk matt plastic emulsion paint	335	SM	200	67,000
	Total for Element No. 06 Finishes Carried to Summary				1,254,6

PROPOSED CONSTRUCTION OF 8 NO. CLASSROOMS AT ILUYA PRIMARY SCHOOL

ITEM	DESCRIPTION	QTY	UNIT	RATE	AMOUNT
	<u>Summary page for Ground Floor</u>				
	Substructure brought forward from page SP/05				3,031,678
	Superstructure Frame brought Forward From page SP/07				3,841,031
	Doors brought Forward from page SP/08				64,800
	Windows brought forward from page SP/10				212,430
	Finishes brought forward from page SP/11				1,254,605
	Total for Ground Floor Works Carried To Main Summary				8,404,544

PROPOSED CONSTRUCTION OF 8 NO. CLASSROOMS AT ILUYA PRIMARY SCHOOL

ITEM	DESCRIPTION	QTY	UNIT	RATE	AMOUNT
FIRST FLOOR ELEMENT-01 SUPERSTRUCTURE FRAME COLUMNS					
A	<u>Reinforced (Provisional)</u> 16mm high tensile reinforcing steel bars including spacers, hoks and tying wire all to position to BS 4461	1195	KG	149	178,055
B	12mm diameter ditto,				
C	8mm diameter ditto, strirrups	240	KG	149	35,760
<u>Formwork to:-</u>					
D	Softwood sawn timber formwork to square/rectangular/round columns	414	KG	158	65,412
<u>Concrete works</u>					
E	Vibrated reinforced concrete (1:2:4) class 20/20mm aggregate reinforced in columns	186	SM	350	65,100
<u>Beams</u>					
<u>Reinforcement (All Provisional)</u>					
F	20mm high tensile reinforcing steel bars including spacers, hooks and tying wires to position	12	CM	12000	144,000
G	16mm diameter bar	815	KG	148	120,620
G	12mm diameter bar	1984	KG	149	295,616
H	8mm diameter bar	508	KG	149	75,692
<u>Main intermediate Beams</u>					
<u>Concrete works</u>					
I	Class 20/20mm agregate, mix (1:2:4) Vibrated and reinforced concrete beams	761	KG	158	120,238
<u>Formwork</u>					
J	Softwood cypress sawn celcured timber formwork to sides and soffits of ring beam	38	CM	12000	456,000
<u>200mm Thick Walling</u>					
K	200mm thick medium dressed one side natural stone walling reinforced with 20mm hoop iron at every second course laid with (1:4) cement sand mortar	440	SM	350	154,000
L	<u>Water proofing</u> 200mm wide bituminous felt damp proof course bedded in (1:3) cement sand mortar	283	SM	1800	509,400
		128	LM	120	15,360
Total for Element No. 01 Superstructure/Frame					2,235,253

PROPOSED CONSTRUCTION OF 8 NO. CLASSROOMS AT ILUYA PRIMARY SCHOOL

ITEM	DESCRIPTION	QTY	UNIT	RATE	AMOUNT
	ELEMENT NO. 03 <u>Windows</u>				
	<u>Galvanized purpose made steel casement windows (supply and fix the following windows using heavy duty steel casement frames complete with hinges, stars, fasteners, permanent vent with mosquito gauze and sheet good assembled and fixed to opening including cutting and pinning lugs to concrete or blockwork surround and bedding frame in cement and sand mortar (1:3) glazing and grill (m.s) to:-</u>				
A	1500 × 1200mm frame all welded joints ground smooth and finished with red oxide coat with two side hanglights; one fixed bottom light and two fixed light	12	NO	10,000	120,000
B	Window size 1500 × 1000mm precast vent blocks fixed to approval <u>Burglar proofing</u>	8	SM	1200	9600
	<u>Supply and fix openings galvanized mild steel grill framed 40×25×3 mm thick R.H.S Including pinning lugs to concrete or blockwork and bedding frame in cement sand (1:4) mortar to:-</u>				
C	1500×1200mm with 45×25×3mm burglar proofing in varied approved patterns, curves <u>Glazing</u>	20	NO	900	18,000
D	6mm thick clear glass fixed to metal frame(M.S) with putty in panes exceeding 0.50m2 but not exceeding 1.0m2 <u>VENT BLOCKS</u>	36	SM	1200	27600
	Supply and fix 450×250 precast concrete vent blocks jointed in cement sand mortar(1:3)	15	SM	450	6750
	Total Carried to collection				181,950

PROPOSED CONSTRUCTION OF 8 NO. CLASSROOMS AT ILUYA PRIMARY SCHOOL

ITEM	DESCRIPTION	QTY	UNIT	RATE	AMOUNT
A	<u>Window Cill</u> 75mm thick x 250mm wide precast concrete (1:2:4) weathered, throated and grooved and bedded on 200mm thick walls including all necessary reinforcement and the building in	36	LM	665	23,940
B	<u>Painting and Decoration</u> Prepare and apply one undercoat and two finishing coats of first quality gloss oil paint both internal and external surface of windows	30	SM	200	6000
Carried to Collection					29,940
<u>COLLECTION</u>					
Brought forward page from page SP/15					181,950
Brought forward from above					29,940
Total for Element No. 03 Windows Carried to Summary					211,890

PROPOSED CONSTRUCTION OF 8 NO. CLASSROOMS AT ILUYA PRIMARY SCHOOL

ITEM	DESCRIPTION	QTY	UNIT	RATE	AMOUNT
	Element No. 05				
	Floor Finishes				
A	A trowelled rough and hard to receive terrazzo	315	SM	300	94500
B	Granded and plished to approval	315	SM	1750	551,250
C	Plastic deviding strips	608	LM	45	27,360
D	100× 25mm thick terrazzo skirting	176	LM	250	44,000
	Plaster				
E	Smooth to receive paint (m.s)	480	SM	250	120,000
F	Ditto but render to key in external walls	158	SM	90	14,220
G	Ditto to columns and beams	80	SM	250	20,000
	Painting and decoration				
H	Prepare and apply one undercoat and two finishing coats of first grade vnyl silk emulsion paint to columns and beams	480	SM	200	96000
I	Prepare and apply one undercoat and two finishing coats of first grade vnyl silk emulsion paint to columns and beams	80	SM	200	16000
J	VERANDAH SUPORTING BALUTRADES 25mm×25mm×3mm square hollow section(SHS) vertical baluster spacing at 150mm c/c on horizontal bottom and top rails of 50×50mm @ 1200mm 75×75×3mm SHS main posts one end fanged and built into concrete bed(m.s) to approval	50	SM	2960	148000
	Painting and Decoration				
K	Prepare and apply one undercoat and two finishing coats of first quality gloss oil paint both internal and external surface of balutraders	50	SM	200	10,000
	Total for Element No. 06 Finishes Carried to Summary				1,141,330

PROPOSED CONSTRUCTION OF 6 NO. CLASSROOMS AT ILUYA PRIMARY SCHOOL

ITEM	DESCRIPTION	QTY	UNIT	RATE	AMOUNT
A	<u>Finishes ctd</u> <u>Ceiling Board</u> 12mm thick chipboard ceiling panel 'V' jointed edges at 600c/e both ways (ms)	352	SM	600	211 200
B	125x25mm cypress softwood cornice	210	LM	176	36 960
C	600x600mm access trap door with 50x50mm timber to edges	4	NO	270	1080
D	<u>Painting and Decoration</u> Prepare and apply one undercoat and two finishing coats of first grade plastic emulsion	352	SM	200	70 400
E	Ditto but cornice	210	LM	40	8 400
F	<u>Fabricate and fix the following unwrot</u> <u>cypress timber</u> 75x50mm brandering	391	LM	109	42 619
G	50x50mm brandering	754	LM	85	64 090
Carried to Collection					434,749
<u>COLLECTION</u>					
Brought forward page from page SP/17					1,141,230
Brought forward from above					434,749
Total for Element No. 04 Finishes Carried to Summary					1,576,079

PROPOSED

ITEM	DESCRIPTION	QTY	UNIT	RATE	AMOUNT
	Rainwater Goods Fabricate and assemble in gauge 18 prepainted steel sheet 250x225 box gutter	90	LM	750	67500
A	75mm diameter down pipe clipped onto concrete wall with and including holder bats at 900mm centres	48	LM	450	21600
B	Extra over box gutter for making hole size 75mm	8	NO	99	792
C	Extra over box gutter for stripped end	8	NO	200	1600
D	Extra over down for pipe for shoe	8	NO	200	1600
E	Prepare and allow one approved, primer, one undercoat and two coats of 'CROWN SOLO or other equal and General surfaces of gutters, overs 300mm girth external	90	LM	90	8100
F	Small pipes, externally	48	LM	80	3840
G	Tongue and grooved timber to eaves 25x100mm tongue & grooved boarding secret nailed to sawn cypress bearers or brandering at 600mm centers.	68	SM	1200	81600
H	Prepare and apply one approved, primer, one undercoat and two coats of 'CROWN SOLO' or other equal and approved polyurethane varnish to:- Surfaces of eaves, over 300mm girth external	68	SM	200	20400
I					
Total Carried to Collection					207,032
COLLECTION					
Brought forward page from page SP/20					1,042,678
Brought down from above					207,032
Total for Element No. 04 Finishes Carried to Summary					1,249,710

ITEM	DESCRIPTION	QTY	UNIT	RATE	AMOUNT
	Element No. 06 Stairs				
	<u>Vibrated reinforced concrete class (1:1:4) 20 mm aggregate as described in:-</u>				
	Stairs	1	CM	12000	12000
	200mm thick stair landing	4	SM	2400	9600
	Stair beam	2	CM	12000	24000
	<u>Sawn formwork as described to:-</u>				
	Sloping soffits of stairs	7	SM	520	3640
	Horizontal soffit of stair landing	6	SM	520	3120
	Sides of stair beam	4	SM	380	1520
	Edge of sloping stair girth 300mm	12	LM	240	2880
	Edge of stair landing girth 75mm-150mm	6	LM	120	720
	Edge of riser 75mm-150mm	24	LM	120	2880
	Reinforcement (All Provisional)				
	<u>The following in high tensile reinforcement square twisted bar to B.S 4461 as described including cutting to lengths, bending, twisting and fixing, including all necessary tying and spacer blocks.</u>				
	12 diameter bar	175	KG	147	26075
	10mm diameter bar	221	KG	153	33813
	Stairs finishes				
	<u>20mm thick cement sand (1:3) screed to:-</u>				
	Stair	6	SM	270	1620
	Landing	4	SM	270	1080
	Sides of stair width 300mm	15	LM	90	1350
Total carried to Collection					124298

PROPOSED CONSTRUCTION OF 8 NO. CLASSROOMS AT ILUYA PRIMARY SCHOOL

ITEM	DESCRIPTION	QTY	UNIT	RATE	AMOUNT
A	Supply and weld on steel hand rail 4.00mm steel flat width 100mm	24	LM	624	14976
B	Supply and fix onto steel top rail 1125mm wrot mahogany or other equal and approved HARDWOOD handrail with three labour <u>Prepare and apply three coats of prime grade gloss paint to:</u>	24	LM	900	21600
C	Metal surface girth 100-200mm(top rail,middle rail and bottom rail)	48	LM	60	2880
D	Metal surface not exceeding 100mm	144	LM	30	4320
E	Prepare and apply three coats of clear varnish on general surface of wood girth 200-300mm	24	LM	60	1440
Total Carried to Collection					45,216
COLLECTION					
	Brought forward page from page SP/22				124 298
	Brought forward from page SP/23				372472
	Brought down from above				45 216
Total for Element No. 07 Stairs Carried to Summary					541,986

NEW BASED CONSTRUCTION OF 8 NO. CLASSROOMS AT ILUYA PRIMARY SCHOOL

ITEM	DESCRIPTION	QTY	UNIT	RATE	AMOUNT
	ELEMENT NO. 08 <u>Vibrated reinforced concrete(1:2:4)20mm aggregate as described in:-</u>				
	150 x 50mm rafters	30	SM	1800	54000
	200mm thick ramp landing	5	SM	2400	12000
	Ramp beam	4	CM	12000	48000
	<u>Sawn calculated second grade cypress in:-</u> Slope soffit to ramp	30	SM	350	10500
	Horizontal soffit of ramp landing	5	SM	520	2600
	Sides of ramp beam	50	SM	350	17500
	Edges of slopping ramp girth 75-150mm	60	LM	120	7200
	Edges of ramp landing 75-150mm	10	LM	120	1200
	Reinforcement (all provisional) <u>The following in high tensile reinforcement square twisted bar to B.S 4461 as described including cutting to lengths, bending all, twisting and fixing, including all necessary tying and spacing blocks</u>				
	20mm diameter bar	202	KG	147	29896
	16mm Ditto	186	KG	149	27714
	12mm Ditto	922	KG	149	137378
	10mm Ditto	334	KG	153	51102
	8mm Ditto	35	KG	158	5530
	Ramp finishes 20mm thick cement sand (1:3) screed to.				
	Ramp	30	SM	270	8100
	Ramp landing	5	SM	270	1350
	Sides of ramp width 200mm	18	LM	60	1080
	Total Carried to collection				645150

PROPOSED CONSTRUCTION OF 8 NO. CLASSROOMS AT ILUYA PRIMARY SCHOOL

ITEM	DESCRIPTION	QTY	UNIT	RATE	AMOUNT
M	15mm thick terrazzo chips to Ramp	30	SM	1750	52500
A	Ramp landing	5	SM	1750	8750
B	Sides of ramp overall width 200mm	18	LM	500	9000
	75x50 purlins				3600
	<u>Cement lime sand (1:1:6) plaster as described to:-</u>				
D	12mm thick in two coats to sloping soffites of ramp	30	SM	100	3000
E	12mm thick in two coats to horizontal soffites of ramp	5	SM	100	500
F	Prepare and apply one undercoat and two finishing coats of vinyl matt emulsion paint on	35	SM	200	7000
	<u>Balusterling</u>				
G	75mmx25mmx3mm rectangular hollow section (RHS) steel bottom rail welded and fixed in position	30	LM	624	18720
H	75mmx25mmx3mm ditto to middle rail.	15	LM	624	9360
I	25mmx25mmx3mm rectangular hollow section(RHS) balusters 1200mm long twice counter sunk, one end fanged and built into concrete bed(MS)	170	NO	260	44200
	<u>Sundries</u>				
J	Weld balusters to metal rail	516	NO	100	51600
K	Extra over baluster for fanged end	170	NO	100	17000
L	Make hole in reinforced for fanged end and make good in cement sand mortar	170	NO	100	17000
Total Carried to collection					238630

PROPOSED CONSTRUCTION OF 8 NO. CLASSROOMS AT ILUYA PRIMARY SCHOOL

ITEM	DESCRIPTION	QTY	UNIT	RATE	AMOUNT
A	Supply and weld on steel hand rail 4mm steel flat width 100mm	34	LM	624	21 216
B	Supply and fix onto steel top rail 1125x50 mm wrot mahogany or other equal and approved HARDWOOD HANDRAIL with three labours	34	LM	900	30 600
C	<u>Prepare and apply three coats of prime grade gloss paint to:-</u> Metal surface girth 100-200mm (top rail, middle rail and bottom rail)	170	LM	60	10 200
D	Metal surface girth not exceeding 100mm	516	LM	30	15,480
E	Prepare and apply three coats clear varnish on general surface of wood girth 200-300mm	34	LM	60	2040
Carried to Collection					79,536
<u>COLLECTION</u>					
Brought forward from page SP/25					45,150
Brought forward from page SP/26					238,630
Brought forward from above					79,536
Total for Element No. 08 Ramp Carried to collection main Summary					733,316

PROPOSED CONSTRUCTION OF 8 NO. CLASSROOMS AT ILUYA PRIMARY SCHOOL

ITEM	DESCRIPTION	QTY	UNIT	RATE	AMOUNT
	<u>MAIN SUMMARY</u>				
	GROUND FLOOR WORK FROM PAGE SP/12				8,404,544
	FIRST FLOOR WORKS FROM PAGE SP/19				4,088,022
	ROOF WORKS FROM PAGE SP/21				1,249,710
	STAIR CASE WORKS FROM PAGE SP/24				54,986
	RAMP WORKS FROM PAGE SP/27				733,316
	TOTAL FOR BUILDER'S WORKS CARRIED TO GRAND SUMMARY				13,933,606

PROPOSED CONSTRUCTION OF 8 NO. CLASSROOMS AT ILUYA PRIMARY SCHOOL

ITEM	DESCRIPTION	QTY	UNIT	RATE	AMOUNT
	PRIME COST AND PROVISIONAL SUMS				
A	Allow prime cost Sum of Kenya Shillings Five Hundred Thousand (Kshs. 500,000.00) only for Electrical Installation and upgrading of main switch to be executed by a nominated sub-contractor		Sum	1	500,000
B	Allow for profit for Main Contractor on item 'A' above		%	1	5000
C	Allow for attendance for Main Contractor on item 'A' above		Sum	1	2,500
D	Allow for a prime cost sum of Kenya Shillings Three Hundred and Fifty Thousand,(Kshs 350,000.00) only for Project Management Team(State Department of Public Works)		Sum	1	350,000
G	Allow a provisional sum of Kenya Shillings Six Hundred Thousand (Ksh.600,000.00) only for contingencies to be spent at the discretion of the pm		Sum	1	600,000
TOTAL FOR PRIME COST AND PROVISIONAL SUMS CARRIED TO GRAND SUMMARY					1,484,000

PROPOSED CONSTRUCTION OF 8 NO. CLASSROOMS AT ILUYA PRIMARY SCHOOL

GRAND SUMMARY							
ITEM	DESCRIPTION	PAGE	OFFICIAL USE		TENDERER'S AMOUNT		
			KSH.	CTS	KSH.	CTS	
1	PRELIMINARIES FROM PAGE	PL/01			10000	00	
2	BUILDER'S WORK FROM PAGE	SP/28			15,507,000	00	
3	P.C & PROVISIONAL SUMS FROM PAGE	PC/1			1,480,000		
<i>N/B: INCLUSIVE OF ALL GOVERNMENT TAXES</i>							
Total carried down to form of Tender					16,998,000	00	

Amount in words: SIXTEEN MILLION NINE HUNDRED AND NINETY EIGHT THOUSAND ONLY.

Name of Tenderer: EXCLUSIVE INVESTMENTS LTD

Address: PO BOX 380-00610 NAIROBI

EXCLUSIVE INVE
R.
Date: 20/11/20

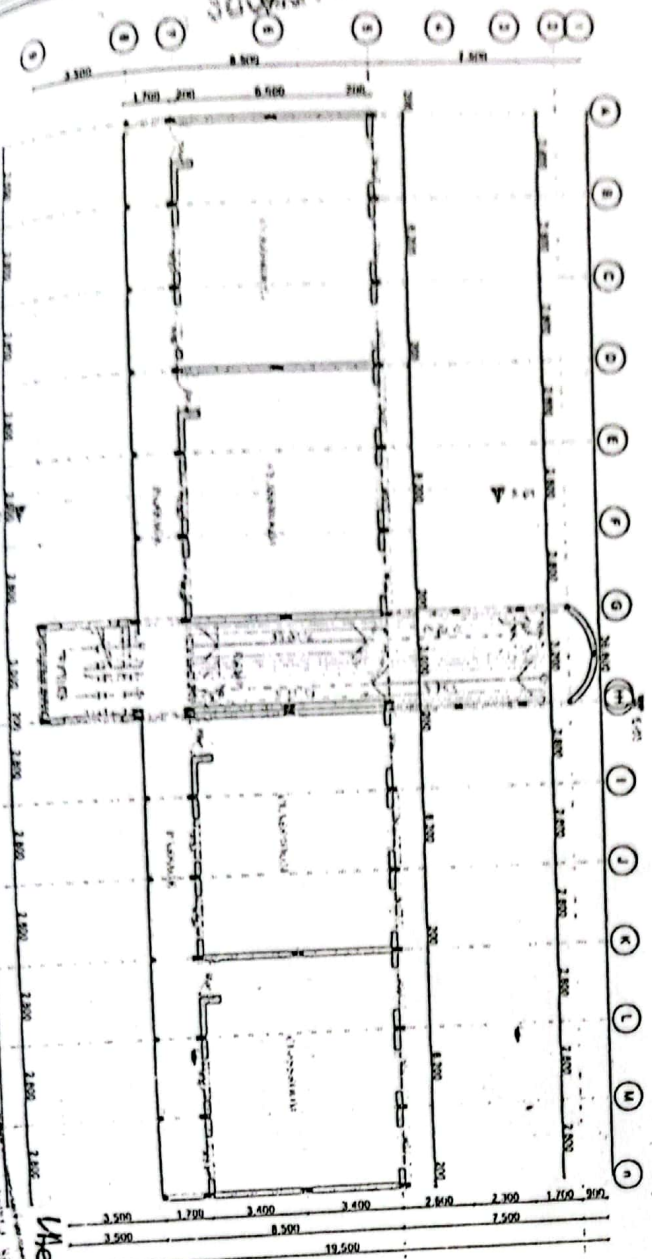
EXCLUSIVE INVESTMENTS LTD
P O BOX 380-00610
NAIROBI

Date and Stamp: HISSAM

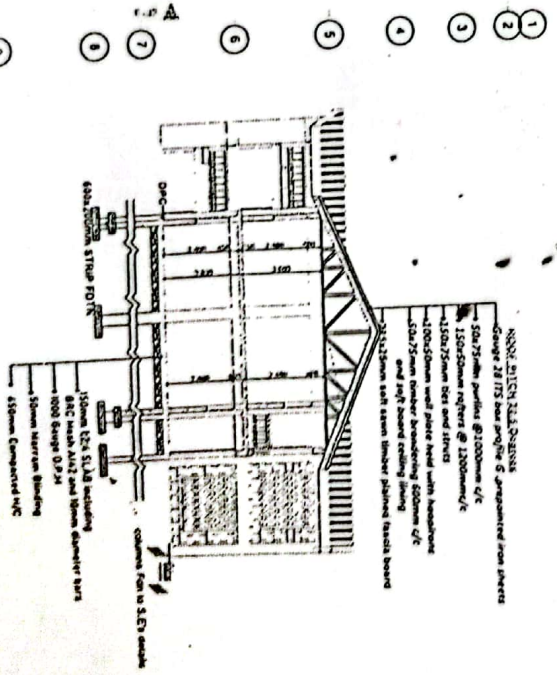
Address: P.O. Box 276 - 00120 WAJIR

Date and Stamp:

TYPICAL GROUND AND 1ST FLOOR PLAN



SECURITY WORKS OFFICER
 Scale Department for Public Works
 Box 14 60100
 604 966 6666
 1400 14th Street SW
 Vancouver BC V6C 1S7



SECTION X-X
 SCALE 1:100

