



REPUBLIC OF KENYA

DEPARTMENT OF PUBLIC WORKS

PROPOSED

TWO STOREY CONSTITUENCY/CDF-NG OFFICE BLOCK

FOR

LAISAMIS CONSTITUENCY

BILL OF QUANTITIES

PREPARED AND ISSUED BY

PUBLIC WORKS OFFICER
P.O. BOX 73-60500

Oct-19

PROPOSED CONSTITUENCY/CDF-NG OFFICE BLOCK, LAISAMIS CONSTITUENCY

ITEM	DESCRIPTION	QTY	UNIT	RATE	AMOUNT
	<u>ELEMENT NO.1</u> <u>SUBSTRUCTURES</u> (ALL PROVISIONAL)				
	Site clearance				
A	Clear site of works of shrubs, bush and small trees, grub up their roots and burn debris	450	SM		
B	Destroy termite nests within site of works, take out and destroy queens, impregnate holes and tunnels with insecticide and fill voids with approved material	450	SM		
C	Excavate to remove top soil and load, wheel and deposit where directed, average depth 200mm	450	SM		
	Excavate in red soil including maintaining and supporting sides and keeping free from water, mud and fallen objects				
D	For Columns and column bases starting from reduced levels not exceeding 1.5M deep	64.8	CM		
E	Ditto commencing at 1.5m n.e 3.0m deep	21.6	CM		
F	For foundations strip commencing at reduced level n.e. 1.5m deep	147.6	CM		
G	For foundations strip commencing at 1.5m n.e 3.0m deep	29.52	CM		
H	Extra over for excavating in soft rock	53	CM		
J	Extra over for excavating in hard rock	21	CM		
K	Trim and level bottom of excavations	142	SM		
	Total Carried to Collection Page 05				

PROPOSED CONSTITUENCY/CDF-NG OFFICE BLOCK, LAISAMIS CONSTITUENCY

ITEM	DESCRIPTION	QTY	UNIT	RATE	AMOUNT
	Disposal				
A	Backfilling around foundations	203	CM		
B	Load and cart away surplus spoil to a city council dump site	135	CM		
	Imported filling				
C	300mm Thick approved hand packed hardcore filling to make up levels	390	SM		
D	Compact surface of existing hardcore and blind to receive concrete	390	SM		
E	Form sinking in hardcore bed size 1000x150mm deep.	10	LM		
	Damp proof membrane				
F	1000 gauge polythene laid under surface beds	390	SM		
	Anti-termite treatment				
G	Chemical anti-termite treatment executed by an approved specialist under a ten year guarantee to surfaces of hardcore etc	390	SM		
	Plain concrete 1:4:8				
H	Blinding under strip footings, thickness 50mm.	123	SM		
J	Blinding under column bases, thickness 50mm.	43.2	SM		
	Total Carried to Collection Page 05				

PROPOSED CONSTITUENCY/CDF-NG OFFICE BLOCK, LAISAMIS CONSTITUENCY

ITEM	DESCRIPTION	QTY	UNIT	RATE	AMOUNT
	Vibrated reinforced concrete class 20 (1:2:4)				
A	Foundation strip footing.	24.6	CM		
B	Columns	4	CM		
C	Column bases	17.28	CM		
D	Ground beam	16	CM		
E	Filling to form ramps	3	CM		
F	Beds, thickness 150mm	390	SM		
G	Steps	6	CM		
H	Thickening under beds etc, size 1000x150mm deep	8	LM		
J	Concrete walls 200mm thick	0	SM		
	Reinforcement (all provisional)				
	High yield deformed steel bar reinforcement to BS4461				
K	16mm diameter	1567	Kg		
L	12mm diameter	4962	Kg		
M	10mm diameter	4048	Kg		
N	8mm diameter	2481	Kg		
	Total Carried to Collection Page 05				

PROPOSED CONSTITUENCY/CDF-NG OFFICE BLOCK, LAISAMIS CONSTITUENCY

ITEM	DESCRIPTION	QTY	UNIT	RATE	AMOUNT
	Mild steel bar reinforcement to BS4449				
A	6mm diameter	556	Kg		
	Steel mesh fabric reinforcement to BS 4483				
B	Layer of mesh fabric reinforcement laid in slab or bed with 200mm side and end laps (measured net- no allowance made for laps) Ref: A142 weighing 2.22kg per square metre	390	SM		
	Formwork				
C	Sides of foundations strip,	82	SM		
D	Sides of columns	80	SM		
E	Sides of columns bases	58	SM		
F	Sides of ground beam	160	SM		
G	Sides of steps	9	SM		
H	Edges of beds, etc 75-150mm high	167	LM		
J	Risers	83	LM		
K	Sides of Concrete walls	0	SM		
	Load bearing natural stone rough dressed walling in cement and sand mortar				
L	Walling thickness 200mm	554	SM		
M	20 gauge hoop iron ties 25mm wide and 450mm girth cast into concrete one end and built into mortar joint of walling	900	No.		
	Total Carried to Collection Page 05				

PROPOSED CONSTITUENCY/CDF-NG OFFICE BLOCK, LAISAMIS CONSTITUENCY

ITEM	DESCRIPTION	QTY	UNIT	RATE	AMOUNT
	Bituminous felt damp proof courses laid on and including levelling screed of cement mortar				
A	In walling, width 200mm	205	LM		
B	In walling, width 150mm	10	LM		
C	In walling, width 100mm	3	LM		
	Cement and sand (1:4) rendering				
D	Rendering plinths to concrete and masonry surfaces finished with a steel float. thickness 20mm	217	SM		
	Prepare and apply 3No. coats black bituminous paint or equivalent and approved				
E	Rendered plinth surfaces externally	217	SM		
	Total Carried to Collection Below				
	<u>Collection</u>				
	Brought forward from page 01				
	Brought forward from page 02				
	Brought forward from page 03				
	Brought forward from page 04				
	Brought down from above				
	Total of Element 01 Carried to Summary				

PROPOSED CONSTITUENCY/CDF-NG OFFICE BLOCK, LAISAMIS CONSTITUENCY

ITEM	DESCRIPTION	QTY	UNIT	RATE	AMOUNT
	<u>ELEMENT NO. 2</u> <u>R.C. SUPERSTRUCTURE</u>				
	Vibrated reinforced concrete class 20/20				
A	Beams	4	CM		
B	Ringbeams	4	CM		
C	Arches	3	CM		
D	Columns	9.6	CM		
E	Staircases	6	CM		
F	Suspended slabs, thickness 150mm	310	SM		
G	Concrete Gutter	25	CM		
H	Concrete walling 200mm thick	41.16	SM		
	Reinforcement (Provisional)				
	High yield deformed steel bar reinforcement to BS 4461				
H	20mm diameter	532	Kg		
J	16mm diameter	1063.32	Kg		
K	12mm diameter	2658	Kg		
L	10mm diameter	3189.96	Kg		
M	8mm diameter	1595	Kg		
	Total of Element 01 Carried to Summary				

PROPOSED CONSTITUENCY/CDF-NG OFFICE BLOCK, LAISAMIS CONSTITUENCY

ITEM	DESCRIPTION	QTY	UNIT	RATE	AMOUNT
	<u>ELEMENT NO. 2 CONT'D</u>				
	<u>R.C. SUPERSTRUCTURE</u>				
	Formwork				
A	Sides of columns	156	SM		
B	Sides and soffits of beams	185	SM		
C	Ditto; curved but to various radius	54	SM		
D	Ditto risers	30	LM		
E	Soffites of suspended slabs	310	SM		
F	Sides of Concrete Walls	41.16	SM		
	Total Carried to Collection below;				
	COLLECTION				
	From page 6				
	From page 7 above				
	Total Carried to collection page 7				

PROPOSED CONSTITUENCY/CDF-NG OFFICE BLOCK, LAISAMIS CONSTITUENCY

ITEM	DESCRIPTION	QTY	UNIT		
	<u>ELEMENT NO. 3</u>				
	<u>SUPERSTRUCTURE WALLING</u>				
	<u>EXTERNAL</u>				
	Approved load bearing fine chiselled, zero joint, dressed and rubbed stone walling laid in various course sizes in cement and sand mortar				
A	Walling, thickness 200mm	422.625	SM		
B	Walling in eaves filling.	251	LM		
C	Extra for fair face and neat horizontal and vertical zero joints	422.625	SM		
D	Extra over walling for approved precast concrete permanent vents	14	NO		
	<u>INTERNAL</u>				
	Approved load bearing machine dressed stone walling in cement and sand mortar				
E	Walling, thickness 200mm	330.75	SM		
	Total of Element 03 Carried to Summary				

PROPOSED CONSTITUENCY/CDF-NG OFFICE BLOCK, LAISAMIS CONSTITUENCY

ITEM	DESCRIPTION	QTY	UNIT	RATE	AMOUNT
	<u>ELEMENT NO. 4</u>				
	<u>ROOF CONSTRUCTION, COVERING AND RAINWATER DISPOSAL</u>				
	<u>ROOF CONSTRUCTION</u>				
	Structural Steel Construction				
	<i>1. Prices shall include for unloading, hoisting and fixing in position including requisite staging for erection and fillet welding</i>				
	<i>2. Allow for factory priming in lead oxide and touching up the priming on site later</i>				
	The following in STEEL ROOF MEMBERS including hoisting and fixing in position 15000mm above ground floor				
	Rolled steel hollow sections				
A	Rafters 60x40x3mm thick	487	LM		
B	Ditto but Zed purlins	365	LM		
C	Capped ends to sections	21	No.		
D	16mm diameter bolts with head, nut and washers, length.	98	No.		
	Total Carried to Collection Page 12				

PROPOSED CONSTITUENCY/CDF-NG OFFICE BLOCK, LAISAMIS CONSTITUENCY

ITEM	DESCRIPTION	QTY	UNIT	RATE	AMOUNT
	<u>ELEMENT NO. 4; ROOF CONSTRUCTION CONT'D</u>				
	A Wall plates bolted (bolts and holes included) size 100x50mm	334	LM		
	<u>ROOF COVERING</u>				
	Aluminium Roofing Sheets				
B	0.5mm Thick (Gauge 26) Aluminium roofing sheets with angular trapezoidal ribbed profile as "Kaluworks RIGIDAL 5" with effective cover of 750mm wide and rib depth 32mm, Maroon colour on top surface and Natural aluminium on bottom surface or equivalent and	785	SM		
	Blockboard to BS3444; plain				
C	Wrot Cypress T&G boarding on timber branders at 1200mm centers	143	LM		
D	25mm thick sawn cypress bearers to eaves 600mm wide to Architects detail.	65	SM		
	Total Carried to Collection Page 12				

PROPOSED CONSTITUENCY/CDF-NG OFFICE BLOCK, LAISAMIS CONSTITUENCY

ITEM	DESCRIPTION	QTY	UNIT	RATE	AMOUNT
	<u>COLLECTION</u>				
	Brought forward from page 9				
	Brought forward from page 10				
	Total of Element 04 Carried to Summary				

PROPOSED CONSTITUENCY/CDF-NG OFFICE BLOCK, LAISAMIS CONSTITUENCY

ITEM	DESCRIPTION	QTY	UNIT	RATE	AMOUNT
	<u>ELEMENT NO. 5:</u>				
	<u>WINDOWS</u>				
	Precast clay tiles, once throated fixed with mortar 1:3				
A	Cills, size 100x25mm	75	LM		
	Window Boards in prime grade wrought Mahogany.				
B	Window boards with one labour plugged, size 125x25mm. Purpose made small panel UPVC casement window to schedule with ventilating hood and 16mm square bar burglar proofing in openings and matching window ironmongery and fixed to masonry jambs and concrete head.	75	LM		
C	Window overall size, 2400x1500mm(WG01)	18	No.		
D	Window overall size, 2100x1500mm(WG02)	2	No.		
E	Window overall size, 1200x1500mm(WG03)	4	No.		
F	Window overall size, 750x1500mm(WG04)	12	No.		
G	Window overall size, 450x600mm(WG05)	8	No.		
H	Window overall size, 900x1500mm(WG06)	10	No.		
	Total Carried to Collection Page 15				

PROPOSED CONSTITUENCY/CDF-NG OFFICE BLOCK, LAISAMIS CONSTITUENCY

ITEM	DESCRIPTION	QTY	UNIT	RATE	AMOUNT
	Clear sheet glass				
A	4mm thick Solar Control sheet glass, body tinted as per Architects scheme colours with 33% transmittance factor, 12% reflectance-in, 38% reflectance-out, UV-Value NFRC 0.31 and a shading coefficient NFRC of 0.36 and glazing to metal with putty in panes not exceeding 0.1 square meter	90	SM		
B	25mm diameter mild steel curtain rods to reinforced concrete beams and lintels	95	LM		
	Total Carried to Collection Below				
	COLLECTION				
	From page 13				
	From page 15 above				
	Total of Element 05 Carried to Summary				

PROPOSED CONSTITUENCY/CDF-NG OFFICE BLOCK, LAISAMIS CONSTITUENCY

ITEM	DESCRIPTION	QTY	UNIT	RATE	AMOUNT
	<u>ELEMENT NO. 6:</u>				
	<u>DOORS</u>				
	Panel doors, frames and finishing in wrought mahogany				
A	50mm thick panel door type D01 overall size 1800x2100mm with 200mm stiles, tops, middle and bottom rails filled with 50mm moulded and beaded panels with and including side fanlight size 400x3000mm high with 6mm thick glass (MS) and beads	1	No.		
D	Ditto but door type D02 overall size 1350 x 2400mm with vent light size 1350 x 300mm high and side light size 900 x 300mm high	5	No.		
B	Ditto but door type D04 & D09 overall size 900 x 2400mm with vent light size 900 x 300mm high	15	No.		
	Flush Doors, frames and finishing in wrought mahogany				
C	solid core flush door type D04 overall size 900 x 2100mm	10	No.		
E	Ditto but door type D05 overall size 900 x 2400mm with vent light size 900 x 300mm high	7	No.		
	Total Carried to Collection Page 19				

PROPOSED CONSTITUENCY/CDF-NG OFFICE BLOCK,LAISAMIS CONSTITUENCY

ITEM	DESCRIPTION	QTY	UNIT	RATE	AMOUNT
A	Reinforced Door-Strong Room Galvanized mild steel super reinforced door type D03 purpose made for armoury strong room complete with iron mongery and accessories as per Architects detail drawing	1	No.		

PROPOSED CONSTITUENCY/CDF-NG OFFICE BLOCK, LAISAMIS CONSTITUENCY

ITEM	DESCRIPTION	QTY	UNIT	RATE	AMOUNT
	Frames and finishings in wrought Mahogany				
A	Frame to detail size, 150x50mm	210.9	LM		
B	Architrave to detail size, 100x25mm	84	LM		
C	Architrave to detail size, 50x25mm	44	LM		
	<u>Glazing</u>				
E	6mm thick body tinted sheet glass as 'Grey 40' with 33% transmittance, reflectance-in 18% and reflectance-out 12%, in panes not exceeding 0.5 square metres complete with assorted beading to doors as described	20	SM		
Total Carried to Collection Page 19					

PROPOSED CONSTITUENCY/CDF-NG OFFICE BLOCK, LAISAMIS CONSTITUENCY

ITEM	DESCRIPTION	QTY	UNIT	RATE	AMOUNT
	Ironmongery - supply and fix the following as Hafele as supplied by Curtain and Covers (K) Ltd or other equal and approved fixed with matching screws				
A	100mm brass butt hinges	6	No.		
B	Approved Heavy duty hinges	24	Prs		
C	Magnetic door locks to Architects specifications	7	No.		
D	Five lever mortice lock with polished brass lever furniture	11	No.		
E	Three lever mortice lock with polished brass lever furniture	4	No.		
F	Two lever mortice lock with polished brass lever furniture	22	No.		
G	Brass tower bolts	41	No.		
H	Heavy Duty Hold stop Door closer	11	No.		
J	Rubber door stop	30	No.		
	Total Carried to Collection Below				
	<u>Collection</u>				
	Brought forward from page 16				
	Brought forward from page 17				
	Brought forward from page 18				
	Brought down from above				
	Total of Element 06 Carried to Summary				

PROPOSED CONSTITUENCY/CDF-NG OFFICE BLOCK, LAISAMIS CONSTITUENCY

ITEM	DESCRIPTION	QTY	UNIT	RATE	AMOUNT
	<u>ELEMENT NO. 7:</u>				
	<u>EXTERNAL FINISHES</u>				
	Cement and sand (1:4) rendering				
A	Rendering to walls finished with a wood float, thickness 25mm	127	SM		
B	Decorative bush dressed facings to square ends, square reveals and square external angles of walling to detail, thickness 50mm	46	LM		
C	Ditto but to flat surfaces as per Architectural elevation drawings	169	SM		
D	Keying and pointing to masonry walls in cement and sand mortar 1:4	42	SM		
E	Ditto but flush vertical joints and pointed horizontal joint	85	SM		
	Eurocon paving tiles (Entrance and steps)				
F	300x300x12mm thick eurocon concrete paving tiles fixed with mortar to approved pattern, in approved colour	80	SM		
G	Raking cutting	18	LM		
	Lime plaster (1:2:9)				
H	Plaster to walls	95	SM		
	Total Carried to Collection Page 21				

PROPOSED CONSTITUENCY/CDF-NG OFFICE BLOCK, LAISAMIS CONSTITUENCY

ITEM	DESCRIPTION	QTY	UNIT	RATE	AMOUNT
	Waterproofing				
	(Flat Roofs)				
A	modified APP system for 4 membrane roofing felt weighing 4 kg @ m2 torched onto primed surfaces with propane gas, 100 mm laps to concrete, over 300mm wide	30	SM		
B	Dressing rainwater, 100mm diameter	4	NO		
C	Collars application to approval	82	SM		
	Total Carried to collection				
	<u>COLLECTION</u>				
	From page 20				
	From page 21 above				
	Total of Element 07 Carried to Summary				

PROPOSED CONSTITUENCY/CDF-NG OFFICE BLOCK, LAISAMIS CONSTITUENCY

ITEM	DESCRIPTION	QTY	UNIT	RATE	AMOUNT
	<u>ELEMENT NO. 8:</u>				
	<u>INTERNAL FINISHES</u>				
	<u>FLOOR</u>				
	Cement and sand (1:4) paving				
A	Paving under floors finished with various finishes (MS)	700	SM		
B	Paving to threads ditto;	15	LM		
C	Paving to risers ditto;	15	LM		
	Ceramic tiling				
D	500x500x10mm thick glazed ceramic tiles fixed with approved adhesive to approved pattern, in approved colour	600	SM		
E	Ditto; but 100mm high skirting	840	LM		
	Total Carried to Collection Page 23				

PROPOSED CONSTITUENCY/CDF-NG OFFICE BLOCK,LAISAMIS CONSTITUENCY

ITEM	DESCRIPTION	QTY	UNIT	RATE	AMOUNT
	<u>WALL</u>				
	Lime plaster				
A	Plaster to walls	753.375	SM		
B	Plaster to columns	156	SM		
C	Plaster to beams	92.5	SM		
	Total Carried to Collection Page 23				

PROPOSED CONSTITUENCY/CDF-NG OFFICE BLOCK,LAISAMIS CONSTITUENCY

ITEM	DESCRIPTION	QTY	UNIT	RATE	AMOUNT
	<u>COLLECTION</u> From page 22 From page 23 above				
	Total of Element 08 Carried to Summary				

PROPOSED CONSTITUENCY/CDF-NG OFFICE BLOCK, LAISAMIS CONSTITUENCY

ITEM	DESCRIPTION	QTY	UNIT	RATE	AMOUNT
	<u>ELEMENT NO. 9:</u>				
	<u>BUILDER'S WORKS</u>				
	In connection to Mechanical works				
	Builder's work in connection with plumbing and fire fighting installation [All Provisional]				
	Chasing and making good for small pipe in: -				
A	Concrete beds and slabs	75	LM		
B	Concrete block walls	85	LM		
	Holes for small pipe through; -				
C	Concrete block walls, thickness				
	Holes and pipe sleeves for large pipe through: -				
F	Reinforced concrete wall or beam, thickness'- 200 mm	25	No.		
	Total Carried to Collection Page 25				

PROPOSED CONSTITUENCY/CDF-NG OFFICE BLOCK, LAISAMIS CONSTITUENCY

ITEM	DESCRIPTION	QTY	UNIT	RATE	AMOUNT
	In connection to Electrical Works				
	Cut for and attend in all trades on the Sub-Contractor installing the following points in a mainly concealed system, including chases, holes and recesses, notching timber, etc, and making good all finishes				
A	Power distribution boards	3	No.		
B	Lighting points with associated switches	125	No.		
C	Socket outlet points	90	No.		
D	Telephone outlets	14	No.		
E	Fire alarm points	4	No.		
	Total Carried to Collection				
	COLLECTION				
	From page 25				
	From page 26				
	Total of Element 9 Carried to Summary				

PROPOSED CONSTITUENCY/CDF-NG OFFICE BLOCK, LAISAMIS CONSTITUENCY

ITEM	DESCRIPTION	QTY	UNIT	RATE	AMOUNT
	<u>ELEMENT NO. 10:</u>				
	<u>WINDOWS</u>				
	Prepare and apply two undercoats stainer and two finishing coats of vanish to:-				
A	Ditto exceeding 100 but not exceeding 200mm girth window board	75	LM		
	Touch up primer and apply one undercoat and two finishing coats of 1st quality supergloss paint to:-				
B	General surfaces of windows and burglar bars (b.s.m).	112.5	SM		
	Total Carried to Collection Page 28				17,250.00

PROPOSED CONSTITUENCY/CDF-NG OFFICE BLOCK, LAISAMIS CONSTITUENCY

ITEM	DESCRIPTION	QTY	UNIT	RATE	AMOUNT
	<u>DOORS</u>				
	Prepare and apply two undercoats stainer and two finishing coats of vanish to:-				
A	General surfaces of doors	110	SM		
B	Surfaces not exceeding 100mm girth	45	LM		
C	Surfaces exceeding 100 but not exceeding 200mm girth.	45	LM		
D	Surfaces exceeding 200 but not exceeding 300mm girth.	45	LM		
	<u>EXTERNAL FINISHES</u>				
	Prepare and apply one undercoat and two finishing coats of crown permacoat paint to:-				
E	General rendered surfaces externally	85	SM		
Total Carried to Collection Page 28					

PROPOSED CONSTITUENCY/CDF-NG OFFICE BLOCK, LAISAMIS CONSTITUENCY

ITEM	DESCRIPTION	QTY	UNIT	RATE	AMOUNT
	<u>INTERNAL FINISHES</u>				
	Prepare and apply two undercoats stainer and two finishing coats of vanish to:-				
A	Surfaces not exceeding 100mm girth of cornices	164	LM		
	Prepare and apply one undercoat and two finishing coats of 1st quality silk vinyl paint to:-				
B	General plastered surfaces of walls	753.375	SM		
C	General plastered surfaces of beams	156	SM		
D	General plastered surfaces of columns	92.5	SM		
	Total Carried to Collection Below				
	<u>COLLECTION</u>				
	Brought forward from page 26				
	Brought forward from page 27				
	Brought down from above				
	Total of Element 10 Carried to Summary				

PROPOSED CONSTITUENCY/CDF-NG OFFICE BLOCK, LAISAMIS CONSTITUENCY

ITEM	DESCRIPTION	QNTY	UNIT	RATE	AMOUNT
	ELEMENT NO. 11				
	<u>BALUSTRADING AND RAILING</u>				
	Chrome plated Stainless steel Cylindrical Hollow Sections as described to:				
A	75mm Diameter top and bottom rails welded and ground smooth to Architect's detail	50	SM		
B	Ditto but balusters grouted in Concrete stairs and masonry walls to Architects detail				
C	15mm diameter intermediate tubes decorative infill welded and ground smooth	50	SM		
	Sundries				
D	8mm diameter, 100mm long bolts	70	SM		
E	Ditto but 75mm long	35	SM		
F	Make holes in concrete and grout	35	No.		
	Total for Element No. 11 (Balustrading & Railing) Carried to Summary				

PROPOSED CONSTITUENCY/CDF-NG OFFICE BLOCK, LAISAMIS CONSTITUENCY

ITEM	DESCRIPTION				AMOUNT
	<u>SUMMARY</u>				
1	Substructure				
2	Reinforced Concrete Superstructure				
3	Superstructure Walling				
4	Roof Construction, Covering & Rainwater Disposal				
5	Windows				
6	Doors				
7	External Finishes				
8	Internal Finishes				
9	Builder's Works in relation to services				
10	Painting and Decorating				
11	Balustrading and Railing				
	TOTAL FOR THE OFFICE BLOCK(BUILDERS WORKS) CARRIED TO BUILDER'S WORK SUMMARY				

PROPOSED CONSTITUENCY/CDF-NG OFFICE BLOCK, LAISAMIS CONSTITUENCY

ITEM	DESCRIPTION	QTY	UNIT	RATE	AMOUNT
	<u>PROVISIONAL SUMS</u>				
A	Allow a provisional Sum of Kshs One Million and Five hundred thousand (Kshs 1,500,000.00) only for Contigencies				
B	Allow a provisional sum for vehicular gate overall size 4200 x 2240mm high in 2No. equal leaves comprising 50 x 50 x 4mm thick rolled hollow section frame all round and at 500mm vertical centres and 600mm horizontal panels infilled with 2040mm high vertical balusters at 115mm centres spear spiked top end complete with locking devices and outer bottom edge with metal castor wheel to Architect's				
C	Pedestrian gate as ditto but size 1000 x 2200mm high to match main gate as per Architect's detail drawing				
D	Allow a provisional Sum of Kshs One Million (Kshs 500,000.00) only for Project Supervision				
E	Allow a Provisional Sum of Kshs One Million, five hundred thousand (1,500,000.00) only for Chainlinked Fencing and Landscaping Works as directed-600Lm Plot perimeter				
F	Allow a provisional Sum of Kshs three hundred thousand (Kshs 300,000.00) only for Electrical works				
	Total of PC Carried to Pc Collection page(Next)				

PROPOSED CONSTITUENCY/CDF-NG OFFICE BLOCK,LAISAMIS CONSTITUENCY

ITEM	DESCRIPTION	QTY	UNIT	RATE	AMOUNT
G	Allow a provisional Sum of Kshs One million, Eight hundred thousand (Kshs 1,800,000.00) only for Mechanical & Plumbing works (septic) & fittings				
H	Allow a provisional Sum of Kshs One hundred and Fifty thousand (Kshs 150,000.00) only for Overhead tank supply and Installation, 2no. 5,000 ltrs tank "ROTO" or Equivalent				
	Total of PC Carried forward (Previous				
	Total of Provisional Sums Carried to Summary				

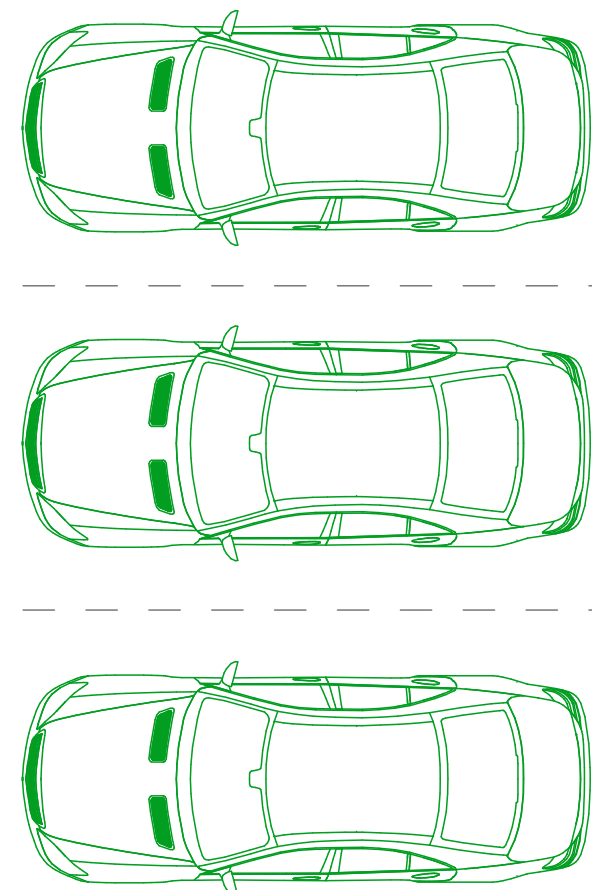
GRAND SUMMARY					
BILL NO.	DESCRIPTION	TENDERERS AMOUNT Kshs	OFFICIAL USE ONLY		
			Kshs		
1	PRELIMINARIES	50,000			
2	BUILDER'S WORKS	20,295,501			
3	PROVISIONAL SUMS	5,900,000			
	<u>SUB-TOTAL A</u>	26,245,501			
	V.A.T(16%)	4,199,280			
	GRAND-TOTAL	30,444,781			
	TOTAL CARRIED TO FORM OF TENDER (VAT INCL.				



NOVAX INFO-MAX & CONSULT

Concept Creation

Designed by: B. Sante (Reg. no B12130)

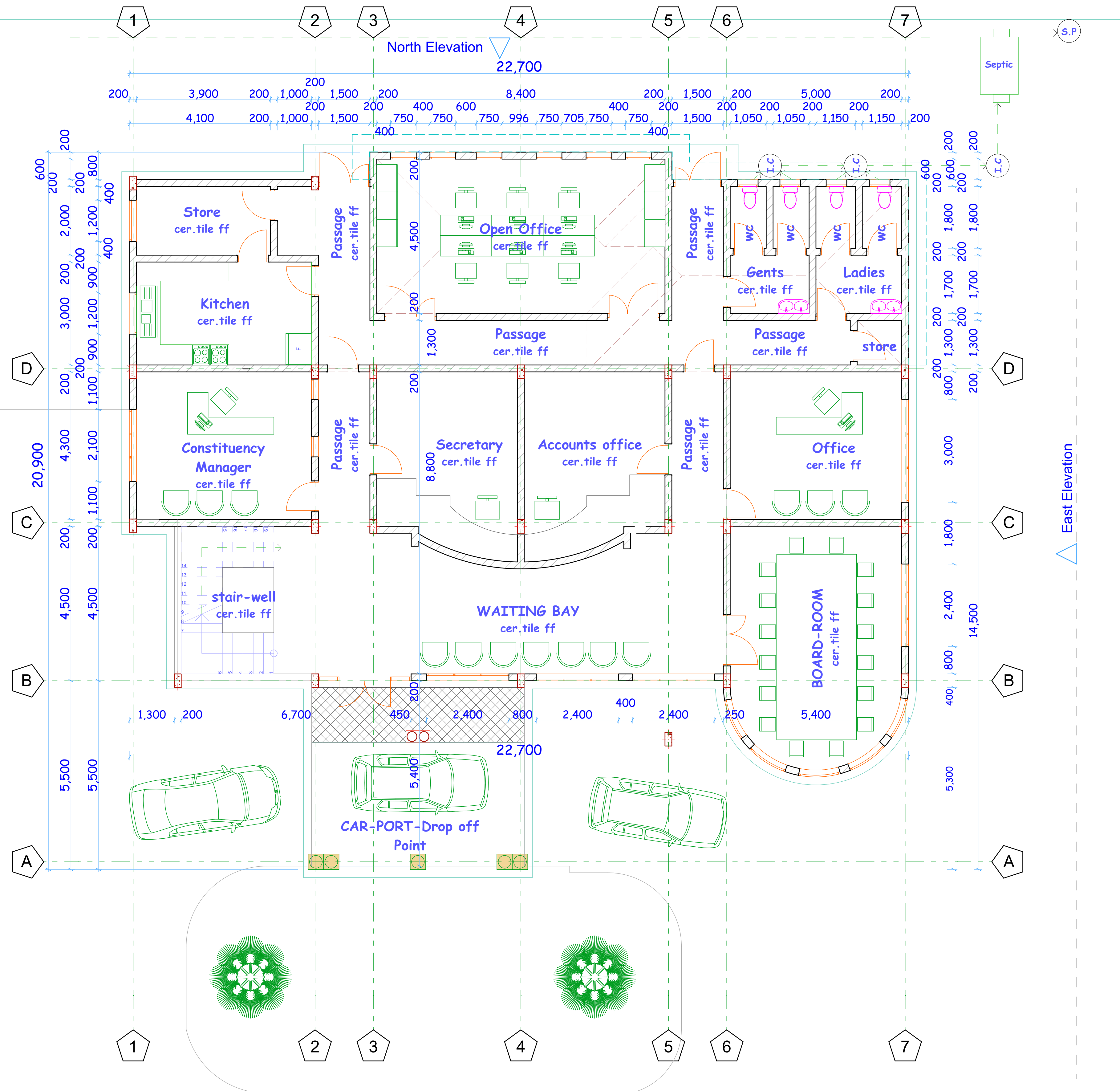


RESERVED PARKING
Cabro ff.

West Elevation

East Elevation

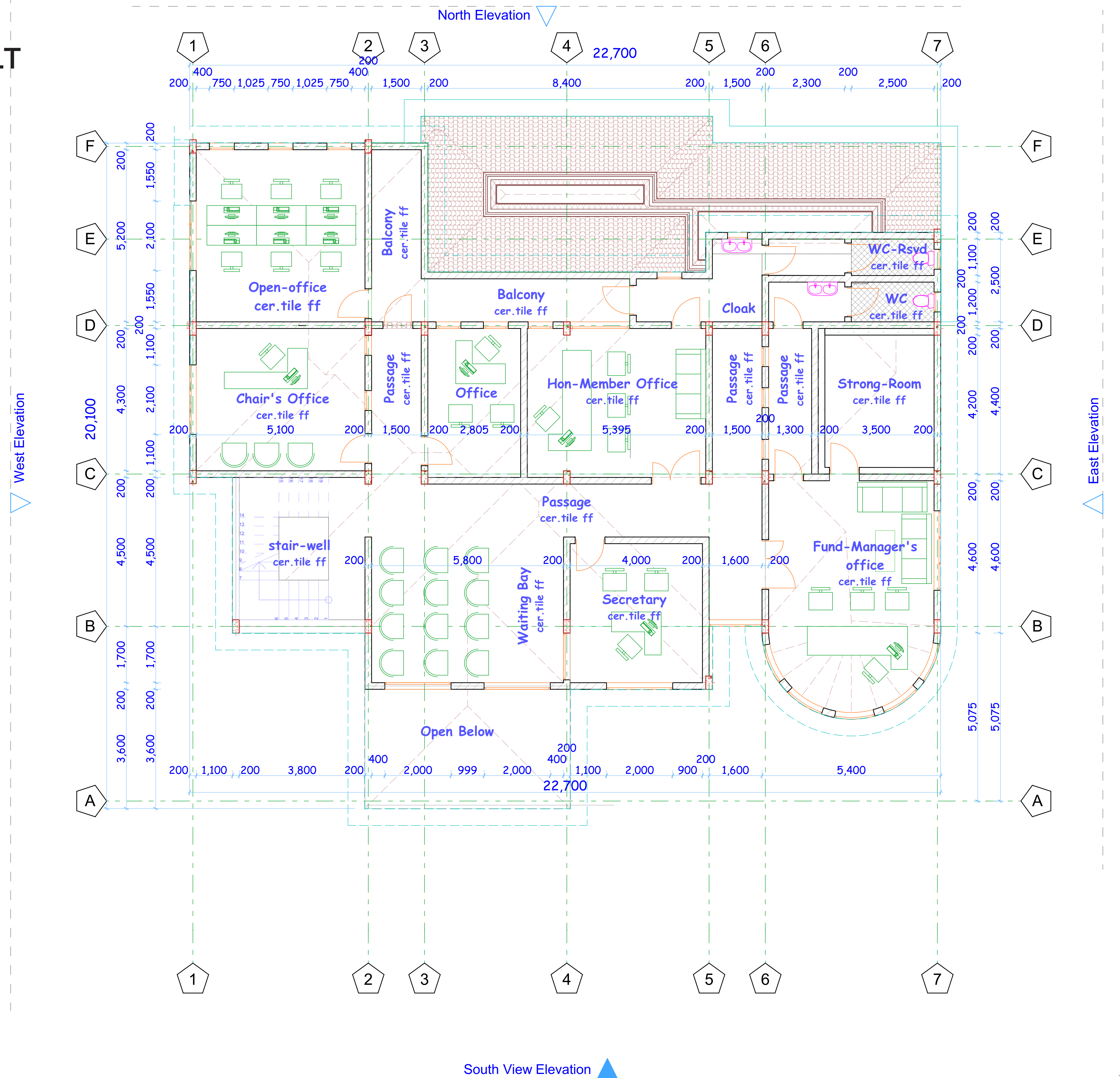
PROPOSED TWO STOREY CONSTITUENCY/CDF OFFICE BLOCK-LAISAMIS CONSTITUENCY



South View Elevation

GROUND FLOOR PLAN LAYOUT
SCALE 1:100

PROPOSED TWO STOREY CONSTITUENCY/CDF OFFICE BLOCK-LAISAMIS CONSTITUENCY



1ST FLOOR PLAN LAYOUT
SCALE 1:75

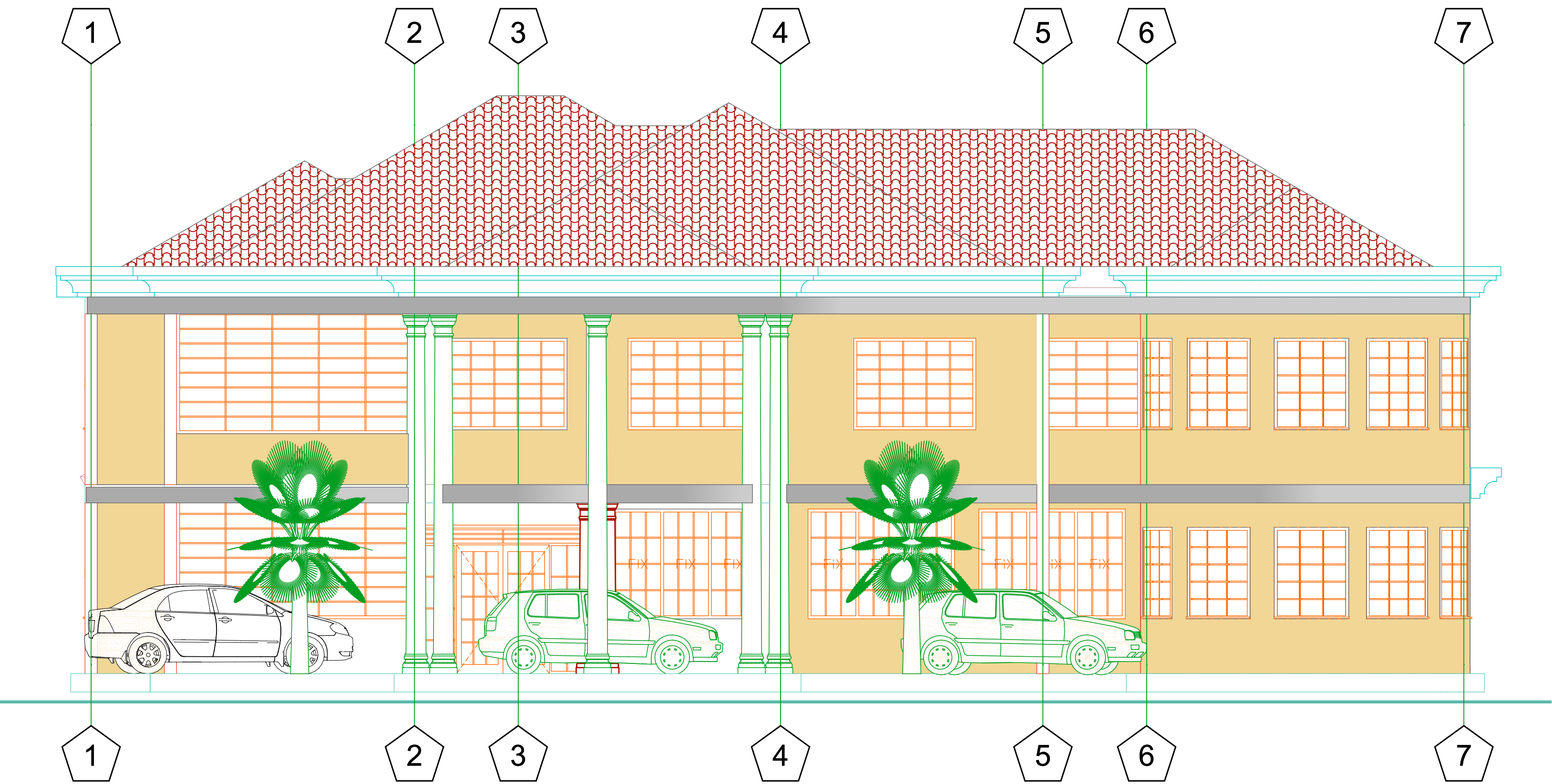


NOVAX INFO-MAX & CONSULT

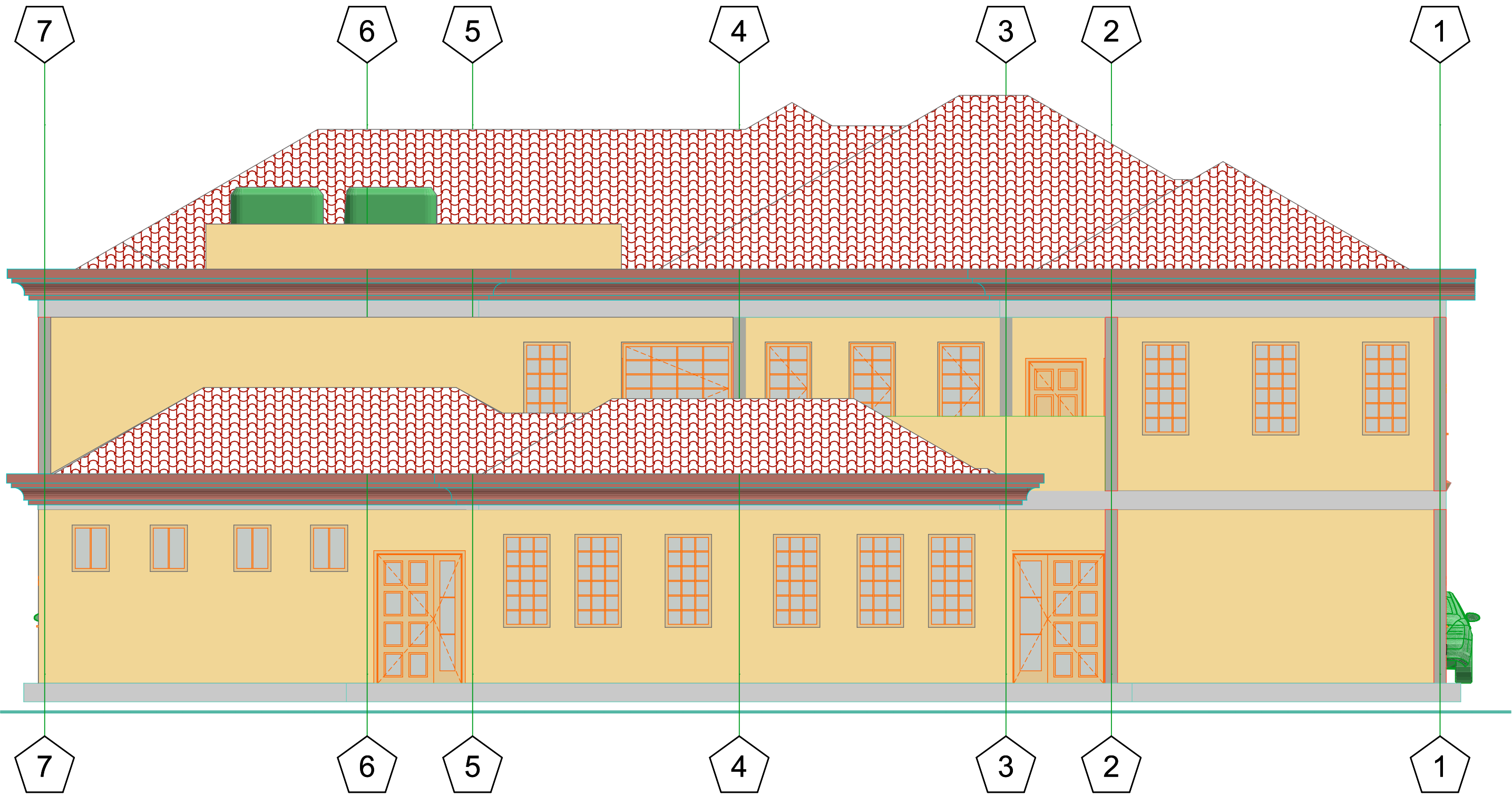
Concept Creation

Designed by: B. Sante (Reg. no B12130)

PROPOSED TWO STOREY CONSTITUENCY/CDF OFFICE BLOCK-LAISAMIS CONSTITUENCY



FRONT(South) VIEW ELEVATION
SCALE 1:75



REAR(North) VIEW ELEVATION
SCALE 1:100



EAST VIEW ELEVATION
SCALE 1:100