



REPUBLIC OF KENYA
MINISTRY OF LANDS, HOUSING AND URBAN DEVELOPMENT
DEPARTMENT OF PUBLIC WORKS

**SPECIFICATIONS AND BILLS OF
QUANTITIES**
FOR
**PROPOSED ERECTION AND
COMPLETION**
OF
**6NO. CLASSROOMS CUM
ADMINISTRATION BLOCK**
AT
LWANDANYI PRIMARY SCHOOL
IN
BUNGOMA COUNTY

TENDER NO.....

PREPARED BY:

County Quantity Surveyor
P.O Box 763
Bungoma.

County Elect./Mech. Engineer
P.O Box 763
Bungoma.

County Architect
P.O Box 763
Bungoma.

County structural Engineer
P.O Box 763
Bungoma.

Issued By:

County Works Officer
Department of Public Works
P.O. Box 763
Bungoma

**PROPOSED ERECTION AND COMPLETION OF 6NO.
CLASSROOMS CUM ADMINISTRATION BLOCK FOR
LWANDANYI PRIMARY SCHOOL.**

ITEM	DESCRIPTION	QTY	UNIT	RATE	KBHS
	SUBSTRUCTURE (ALL PROVISIONAL)				
	EXCAVATION AND EARTHWORKS				
	SITE PREPARATION				
	Clearing site vegetation; grubbing up roots and filling up voids left with selected				
A	Bushes, shrubs, undergrowth or the like and cart away from site	675	SM	100	67,500
	EXCAVATION				
B	Excavating vegetable soil and deposit as directed average 150 mm thick	675	SM	100	67,500
	Excavating Surface to reduce level.				
C	Over 300mm deep	203	CM	200	40,600
	Excavating for trenches and piers; to receive foundations starting from reduced level				
D	Not exceeding 1.50m deep	176	CM	200	35,200
	Breaking out existing material; extra over all kinds of excavations irrespective of depth				
E	Rock irrespective of class	4	CM	1000	4,000
F	Excavate pit for column bases starting from stripped level n.e 1.5 metres deep	193	CM	200	38,600
	Disposal				
G	Excavated material; Backfilling depositing and compacting in layers maximum 150mm thick	117	CM	200	23,400
H	Surplus excavated material; removing from site mechanically	252	CM	200	50,400
	DISPOSAL OF WATER				
	Labour and materials, keeping excavations free from general water		ITEM	10000	10,000
Total Carried to collection					337,200

ITEM	DESCRIPTION	QTY	UNIT	RATE	KSHS
	PLANKING AND STRUTTING				
A	Labour and materials, to uphold sides of excavation generally		ITEM	10000	10,000
	FILLING				
	Hardcore				
B	300mm thick depositing and compacting in layers maximum 150mm thick in making up levels	443	SM	400	177,200
	Murram				
C	Blinding surfaces of fill 50 mm thick	443	SM	100	44,300
	ANTI-TERMITE AND HERBICIDE TREATMENT <u>Applying "Termidor 25 EC" solution or other equal and approved sprayed evenly</u>				
D	To surface of fill and tops of foundation walls	443	SM	150	66,450
	CONCRETE WORK				
	INSITU CONCRETE				
E	Plain mix 1:4:8 in foundation strip blinding 50mm thick	117	SM	400	46,800
F	Ditto in column bases	129	SM	400	51,600
	<u>Vibrated reinforced concrete Class 20/20mm (1:2:4) in:-</u>				
	Foundation strip	24	CM	13000	312,000
	Column bases	58	CM	13000	754,000
	Columns generally	5	CM	13000	65,000
	Floor Beds 150 mm thick	443	SM	1300	575,900
	Total Carried to collection				2,103,250

ITEM	DESCRIPTION	QTY	UNIT	RATE	RSRS
REINFORCEMENT					
<i>Bars : high tensile steel; cold worked; B. S. 4461 including bends, hooks, tying wire, distance blocks and spacers</i>					
A	8mm Diameter bars	474	KG	150	71,100
B	10mm ditto		KG	150	150
C	12 mm diameter	608	KG	150	91,200
D	16 mm ditto	3751	KG	150	562,650
Fabric; B.S 4483					
F	Reference A142; mesh 200 x 200 mm weight 2.22 kgs per square meter (Measured net - no allowance made for laps); including bends, tying wire and distance blocks in any location	443	SM	450	199,350
SAWN FORMWORK TO INSITU CONCRETE					
G	Edges of floor bed 75 to 150 mm wide	102	LM	150	15,300
H	Sides of vertical columns	88	SM	500	44,000
WALLING					
I	225mm thick approved local stone, roughly squared; bedding and jointing in cement mortar (1:4); reinforced with hoop iron gauge 500 in every alternate course	292	SM	1500	438,000
DAMP PROOF MEMBRANES					
<i>500 gauge Polythene laid with 150mm laps,(No allowance made for laps)</i>					
J	Horizontal in 1 No. of layer	443	SM	120	53,160
PLINTH FINISHES					
<i>Render, cement and sand (1:4) wood floated</i>					
	12mm thick 2 No. coat work, to concrete or blockwork base (m/s) generally external	46	SM	200	9,200
	<u>Painting; 3 coats black bituminous paint to rendered surfaces external</u>	46	SM	200	9,200
FOUNDATIONS					
CONCRETE SLABS					
<i>Best Concrete; class 20/20</i>					
	600 x 50 mm thick slabs laid on and supported on 50 mm (consolidated) bed of sand; and pointed in cement sand 1:3 mortar V-shaped	64	SM	1200	76,800
	<i>carried to collection</i>				1,570,110

ITEM	DESCRIPTION	QTY	UNIT	RATE	KSHS
A	Brought forward from page 1				337,200
B	Brought forward from page 2				2,103,250
C	Brought forward from page 3				1,570,110
Total for Substructures carried to Summary					4,010,560

ITEM	DESCRIPTION	QTY	UNIT	RATE	KSHS
REINFORCED CONCRETE FRAME					
CONCRETE WORK					
INSITU CONCRETE					
<u>Vibrated class 20/20mm (1:2:4) in::</u>					
A	Beams	44	CM	13000	572,000
B	Columns	23	CM	13000	299,000
C	150mm thick suspended slab	443	SM	1250	553,750
REINFORCEMENT					
<u>Bars : high tensile steel; cold worked; B. S. 4461 including bends, hooks, tying wire, distance blocks and spacers</u>					
D	8mm diameter in any location	1835	KG	150	275,250
E	10mm ditto	5816	KG	150	872,400
F	12mm ditto	2009	KG	150	301,350
G	16mm ditto	4401	KG	150	660,150
FORMWORK TO INSITU CONCRETE					
H	Horizontal soffites of suspended slab	443	SM	400	177,200
I	Columns sides, vertical or battering generally	359	SM	400	143,600
J	Sides and soffites of beams	438	SM	400	175,200
K	Edges of suspended slab 75 - 150mm thick	109	LM	400	43,600
al Carried to collection					4,073,500

ITEM	DESCRIPTION	QTY	UNIT	RATE	KSHS
	REINFORCED CONCRETE FRAME				
	CONCRETE WORK				
	INSITU CONCRETE				
	<u>Vibrated class 20/20mm (1:2:4) in:-</u>				
A	Beams	44	CM	13000	572,000
B	Columns	23	CM	13000	299,000
C	150mm thick suspended slab	443	SM	1250	553,750
	REINFORCEMENT				
	<u>Bars : high tensile steel; cold worked; B. S. 4461 including bends, hooks, tying wire, distance blocks and spacers</u>				
D	8mm diameter in any location	1835	KG	150	275,250
E	10mm ditto	5816	KG	150	872,400
F	12mm ditto	2009	KG	150	301,350
G	16mm ditto	4401	KG	150	660,150
	FORMWORK TO INSITU CONCRETE				
H	Horizontal soffites of suspended slab	443	SM	400	177,200
I	Columns sides, vertical or battering generally	359	SM	400	143,600
J	Sides and soffites of beams	438	SM	400	175,200
K	Edges of suspended slab 75 - 150mm thick	109	LM	400	43,600
	Total Carried to collection				

ITEM	DESCRIPTION	QTY	UNIT	RATE	KSHS
<u>STAIRS & BALUSTRADING</u>					
<u>Vibrated Reinforcement Class 20/20 aggregate as described in:</u>					
A	Steps and risers	1	CM	13000	13,000
B	150mm thick horizontal suspended landing	3	SM	1300	3,900
C	Sloping waist 175mm thick	12	SM	1500	18,000
D	Ramp	20	CM	13000	260,000
<u>Sawn formwork as described to Horizontal soffits of suspended</u>					
E	Landing	3	SM	400	1,200
F	Sloping soffities of stair waist	12	SM	400	4,800
G	Sloping edge of staircase open string cut to profile of treads and risers 300mm maximum width	20	LM	150	3,000
H	Edges of suspended landing 75 - 150 mm high	13	LM	150	1,950
I	Edges of risers 75 - 150mm high	24	LM	150	3,600
<u>BALUSTRADES</u>					
J	30 x 30 x 3mm thick square hollow section balusters welded to handrail on one side; the other built in concrete including making good in cement and sand grout at 1000mm centres overall 1200mm high.	81	LM	350	28,350
K	Make holes in reinforced concrete for 30 x 30 mm balusters	223	NO	150	33,450
L	30 x 30 x 3mm thick square hollow section mid railing welded to 30 x 30 x 3mm thick baluster (m/s) horizontally on both ends at 300mm	268	LM	250	67,000
M	100 x 25 mm thick wrot hardwood handrail moulded and groved and screwed to balusters (m/s) and ends grouted in to concrete	67	LM	550	36,850
Total Carried to collection					475,100

ITEM	DESCRIPTION	QTY	UNIT	RATE	KSHS
	<u>ONE UNDERCOAT, TWO COATS OIL PAINT FULL GLOSS FINISH TO CROWN PAINTS OR EQUAL AND APPROVED</u>				
A	Metal surfaces 100-200 mm girth	256	LM	200	51,200
	<u>ONE UNDERCOAT, TWO COATS POLYURETHANE VARNISH</u>				
B	Timber surfaces 100 - 200mm girth	67	LM	200	13,400
Total Carried to collection					64,600
<u>COLLECTION</u>					
C	Brought forward from page 5				4,073,500
D	Brought forward from Page 6				475,100
E	Brought forward from above				64,600
Total Reinforcement Concrete carried to Summary					4,613,200

ITEM	DESCRIPTION	QTY	UNIT	RATE	KSHS
	<u>WALLING</u>				
	<u>Approved natural stone, fine chisel dressed one side bedded and jointed in recessed pointing one side in cement and sand mortar (1:4).</u>				
A	Walls 200mm thick reinforced with hoop iron gauge 500 in every alternate course	807	SM	1500	1,210,500
B	150mm thick walls a.b.d	0	SM	1500	0
	DAMP PROOF COURSES				
	<u>B.S 743, type A, bitumen hessian base 150mm laps, No allowances made for laps</u>				
C	200mm wide, bedded in cement mortar (1:3)	143	LM	200	28,600
D	150mm wide, bedded in cement mortar (1:3)	0	LM	100	0
Total Walling carried to Summary					1,239,100

ITEM	DESCRIPTION	QTY	UNIT	RATE	KSHS
<u>ROOFING</u>					
ROOF COVERING					
A	Pre-painted G.C.I. Sheets Gauge 28 as manufactured by "Galsheet Kenya Limited"	655	SM	1700	1,113,500
B	Ridge cap in matching materials do	79	LM	250	19,750
C	Valley ridge	25	LM	250	6,250
<u>CARPENTRY</u>					
<u>STRUCTURAL TIMBERS</u>					
<u>Cypress, Prime grade, pressure impregnated</u>					
C	75mm x 50mm purlin	667	LM	200	133,400
D	100 x 50mm Wall plate bedded in cement : sand (1:3) mortar bolted to concrete with and including 16mm diameter bolts cast in concrete	109	LM	250	27,250
E	100 x 50mm Tie or strut	328	LM	250	82,000
F	150 x 50mm Rafters	636	LM	300	190,800
G	Ditto tie beam	361	LM	300	108,300
H	150mm x 50mm support beam/ collar plates	62	LM	300	18,600
BOARDING					
<u>Wrought cypress, prime grade, pressure impregnated</u>					
I	225 x 25mm thick Fascia or barge boards	109	LM	300	32,700
J	Eaves/ Verge filling in 25mm thick T & G or equal and approved alternative.	66	SM	1,300	85,800
K	50 x 50mm bearers nailed to sawn cypress	109	LM	150	16,350
L	Ditto plugged	109	LM	40	4,360
Total Carried to collection					1,839,060

ITEM	DESCRIPTION	QTY	UNIT	RATE	KSHS
RAINWATER INSTALLATIONS					
Gutterwork, PVC gutter and fittings					
A	150 mm PVC Gutters half round in running lengths, fixing with brackets at 1000mm centres (M.S) and with appropriate jointing (M.S)	109	LM	850	92,650
B	Extra over gutters for 100mm diameter pipe	8	NO	200	1,600
C	Ditto stopped end	8	NO	200	1,600
D	Ditto brackets	110	NO	150	16,500
E	Ditto Corners	10	NO	150	1,500
F	Ditto joints	24	NO	100	2,400
Rainwater pipework					
G	100mm diameter pipes complete with connections in the running lengths, fixing with PVC holders/bats at 1000mm centers to backgrounds requiring plugging on walls	48	LM	450	21,600
H	Extra over pipework for shoes	8	NO	300	2,400
I	Ditto swanneck	8	NO	300	2,400
PAINTING AND DECORATING					
ONE UNDERCOAT TWO COATS OIL PAINT					
FULL GLOSS FINISH TO CROWN PAINTS OR					
EQUAL AND APPROVED					
J	General timber board surfaces	66	SM	300	19,800
K	Ditto 200 to 300mm girth external	109	LM	200	21,800
Total Carried to collection					184,250
COLLECTION					
L	Brought forward from page 9				1,839,060
M	Brought down from above (Page 10)				184,250
Total Roofing Carried to Bill No. 2 Summary					2,023,310

EM	DESCRIPTION	QTY	UNIT	RATE	KSHS
	WINDOWS				
	<u>Precast concrete, Normal, Class 20/ 20mm vibrated</u>				
A	Sills 250 x 75mm thick, once sunk weathered, once throated, reinforced as necessary for handling, bedding jointing and pointing in cement mortar (1:4)	97	LM	600	58,200
	<u>JOINERY</u>				
	<u>WROT CAMPHOR</u>				
B	120X20mm window boards, moulded and fixed to masonry surface with screws and grounds.	97	LM	500	48,500
	<u>WROT CYPRESS</u>				
C	Built up pelmet box made of 125x25mm front, 100 x 25 mm top and ends, 25 x 50 mm bearers all assembled and fixed to wall with nails and grounds.	97	LM	800	77,600
	<u>METAL WORK</u>				
	<u>PURPOSE MADE UNITS</u>				
	Casement mid hang window with horizontal pivots; standard metal casement sections, permanent ventilators comprising T-bar gauze wire and metal hood to fill width of window, but 100mm deep one coat primer by manufacturer; complete with all necessary ironmongery, steel for glazing with putty, cutting and pinning lugs to concrete or blockwork, fixing to head and sill with screws and plugging.				
D	Overall size 2000x1500mm high	42	NO	12000	504,000
	Windows cont'd				
E	Welded metal grill burglar proofing in 20mmx 20mmx 1.5mm thick SHS bars with one coat primer including welding to metal.	126	SM	2000	252,000
	<u>GLAZING</u>				
F	4mm thick clear sheet glass and glazing to metal with putty in panes n.e 0.1m ²	126	SM	1500	189,000
	Total Carried to collection				1,129,300

ITEM	DESCRIPTION	QTY	UNIT	RATE	KSHS
	<u>PAINING AND DECORATING</u> <u>ONE UNDERCOAT TWO COATS OIL PAINT</u> <u>GLOSS OIL FINISH AS CROWN PAINTS OR</u> <u>OTHER EQUAL AND APPROVED</u> <u>CATALOGUE</u>				
A	Metal window surfaces generally internally and externally measured overall	252	SM	300	75,600
B	Plastered Concrete and masonry surfaces 200 - 300mm girth	97	LM	200	19,400
C	Timber surfaces 100-200mm girth including priming where necessary.	97	LM	100	9,700
Total Carried to collection					104,700
	<u>COLLECTION</u>				
D	Brought Forward from page 11				1,129,300
E	Brought forward from page 12 above				104,700
TOTAL FOR WINDOWS CARRIED TO SUMMARY					1,234,000

ITEM	DESCRIPTION	QTY	UNIT	RATE	KSHS
	<u>DOORS</u>				
	<u>JOINERY</u>				
	<u>Frames: Wrot Mahogany</u>				
A	150 x 50mm rebated frame once laboured	18	LM	700	12,600
B	45 x 25mm Architraves	18	LM	100	1,800
C	15 x 15mm quadrant	18	LM	100	1,800
	<u>Timber doors</u>				
D	Solid core flush door 45mm thick, 900 x 2400mm high, 6mm mahogany veneer facing both sides, hardwood lipping on all exposed	0	NO	0	0
E	900 x 2400mm high mahogany paneled door to detail in single leaf and with fanlight do.	3	NO	17280	51,840
F	Ditto but 1200x2400mm high door	0	NO	0	0
G	Ditto but 1300x2400mm high door	0	NO	0	0
	<u>STEEL DOORS</u>				
	<u>Standard steel door complete with all necessary ironmongery, permanent vent with mosquito gauze & sheet hood assembled and fixed to opening including cutting and pinning lugs to concrete or sand mortar (1:4) all primed with red oxide before fixing</u>				
H	1200 x 2400mm steel casement door comprising 50 x 25 x 1.5mm cladding welded together; 32 x 32mm x 1.5mm thick frame and complete with 5-lever mortice lock and with fanlight.	6	NO	20000	120,000
I	3000 x 2400mm steel casement door comprising 50 x 25 x 1.5mm cladding welded together; 32 x 32mm x 1.5mm thick frame and complete with 5-lever mortice lock and with fanlight.	0	NO	0	0
	Total Carried to collection				188,040

ITEM	DESCRIPTION	QTY	UNIT		
	IRONMONGERY				750
	<u>Supply and fix the following :-</u>				
A	Steel butt hinges 100mm	5	PRS	150	0
B	Indicator bolts	0	NO	2500	
C	225 x 25 x 3mm thick door fixing cramps one end bent and twice screwed to frame and the other end fanged and built into masonry wall	18	NO	60	1,080
D	Door stops fixed to wall or floor with screws	7	NO	70	490
E	Two lever mortice lock complete with set lever handle furniture.	0	NO	2,200	0
E	3- lever mortice lock complete with set lever handle furniture.	3	NO	3,500	10,500
	<u>PAINTING AND DECORATING</u>				
	<u>ONE COAT ALUMINIUM HARDWOOD PRIMER TO CROWN PAINTS OR EQUAL AND APPROVED</u>				
F	Wood surfaces before fixing not exceeding 100 mm girth internal	18	LM	50	900
G	Ditto n.e 100 mm girth	18	LM	50	900
	<u>ONE UNDERCOAT, TWO COATS POLYURETHANE CLEAR VARNISH TO CROWN PAINTS OR EQUAL AND APPROVED</u>				
H	General wood surfaces externally and internally	23	SM	200	4,600
I	General metal surfaces externally and internally	13	SM	200	2,600
J	Wood surfaces 200 - 300mm girth externally	18	LM	100	1,800
K	Ditto 0 - 100mm girth	18	LM	100	1,800
	Total Carried to collection				25,420
L	COLLECTION Brought forward from Page 13				188,040
M	Brought forward from Page 14 above				25,420
	Total Doors carried to Summary				213,460

ITEM	DESCRIPTION	QTY	UNIT	RATE	KSHS
<u>FINISHES</u>					
<u>FLOOR, WALL AND CEILING FINISHES</u>					
<u>FLOORS</u>					
A	25mm thick cement sand screed (1:4) floor finish.	886	SM	400	354,400
B	15mm thick terazzo floor finishes	886	SM	2200	1,949,200
C	20mm x 100mm high Terazzo skirting with rounded junction with wall finish and coved junction with floor internal	306	LM	500	153,000
<u>WALLS</u>					
D	12mm thick, 2 No. coat work Plaster 1:2:6 to concrete or blockwork base (m/s) generally, walls internally finished smooth	918	SM	400	367,200
E	Keying and paiting to walls externally	586	SM	400	234,400
<u>CEILINGS</u>					
E	12mm thick, 2 no. coat work plaster 1:2:6 to concrete soffits of suspended slab internally.	443	SM	400	177,200
F	12mm thick softboard "celotex" sheet nailed onto timber brandering(m.s)	443	SM	1200	531,600
H	Sawn cypress brandering 75 x 50mm	974	LM	250	243,500
I	Ditto size 50 x 50mm do	1885	LM	150	282,750
J	Extra over ceiling for trap door size 600 x450mm complete with framing.	4	No	900	3,600
<u>Cypress prime grade, pressure impregnated</u>					
K	Ex50mm thick x 75mm wide moulded cornice plugged to wall and nailed to ceiling finish.	237	LM	300	71,100
Total Carried to collection					4,367,950

ITEM	DESCRIPTION	QTY	UNIT	RATE	KSHS
PAINTING AND DECORATING					
<u>THREE COATS PVA BASED EMULSION PAINT TO CROWN PAINTS OR EQUAL AND APPROVED</u>					
A	Plastered soffits of suspended slab	443	SM	200	88,600
B	Celotex ceiling surfaces	443	SM	200	88,600
C	Timber surfaces n e 100 mm girth	237	LM	200	47,400
<u>ONE UNDERCOAT TWO COATS OIL PAINT FULL GLOSS FINISH TO CROWN PAINTS OR EQUAL AND APPROVED</u>					
D	Plastered wall surfaces internally	918	SM	200	183,600
<u>STAIR CASE FINISHES</u>					
Cement sand screed 1:4 as described in: -					
E	20mm thick landing	3	SM	450	1,350
F	Ditto treads 300mm wide	24	LM	200	4,800
G	Ditto on risers 150mm high	24	LM	200	4,800
H	100 x 20mm thick skirting	22	LM	200	4,400
<u>Terazzo floor as described to: -</u>					
I	12mm thick on horizontal soffites of landing	3	SM	2200	6,600
J	Ditto on sloping soffits of stairs	72	SM	2200	158,400
K	Ditto to edge of staircases string	12	SM	2200	26,400
L	Prepare and apply three coats plastic emulsion paint on plastered surfaces internally	87	SM	200	17,400
Total Carried to collection					632,350

ITEM	DESCRIPTION	QTY	UNIT	RATE	KSHS
<u>COLLECTION</u>					
A	Brought forward from page 15				4,367,950
B	Brought forward from page 16				632,350
Total Finishes carried to Summary					5,000,300

ITEM	DESCRIPTION	Page	KSHS
<u>SUMMARY</u>			
A	SUBSTRUCTURES	5	4,010,560
B	REINFORCED CONCRETE FRAME	8	4,613,200
C	WALLING	9	1,239,100
D	ROOFING	11	2,023,310
E	WINDOWS	13	1,234,000
F	DOORS	15	213,460
G	FINISHES	17	5,000,300
TOTAL BUILDING WORKS FOR 1NO. BLOCK			18,333,930

PROPOSED ELECTRICAL WORKS FOR 6NO. CLASSROOMS

ITEM	DESCRIPTION	QTY	UNIT	RATE	AMOUNT
	Supply and install, test and the following				
A	<u>GROUND FLOOR 4NO. CLASSROOMS</u>				
	<u>LIGHTING POINTS.</u>				
1.01	Lighting points wired with 3x1.5mm ² single core PVC copper cables drawn in concealed 20mm dia HG PVC conduit for :- a) one way switching b) two way switching	46 4	NO. NO.	2500 3200	115000 12800
	<u>SWITCHES.</u>				
1.02	10 Amps, moulded plate flush mounted switches with screw covers, as CLIPSAL, BG or approved equivalent being :- a) 1 gang 1 way b) 1 gang 2 way. c) 3 gang 1 way d) Intermediate Switch.	4 2 4 1	NO. NO. NO. NO.	350 350 450 450	1400 700 1800 450
	<u>LIGHTING FITTINGS.</u>				
1.03	Lighting fittings complete with lamps and all other necessary accessories a) 1200mm, 1x36 Watts batten fluorescent fitting as THORN or philips or approved equivalent. b) 1500mm 1x58W with angle reflector.	41 4	NO. NO.	2000 5000	82000 20000
1.04	Supply and install 100W Tungsten Bulkhead fitting c/w 100W pin Type bulb.	5	NO.	2000	10000
	<u>POWER POINTS.</u>				
1.05	13 Amps. Power points wired ring comprising of 3x2.5 mm sq. single core PVC copper cables drawn in concealed 25mm HG PVC conduits.	4	NO.	4000	16000
1.06	13 Amps. Moulded plate switched socket outlet with neon indicator as BG, CLIPSAL or approved equivalent being :- a) Twin	4	NO.	800	3200
	<u>SUB-MAIN CIRCUIT</u>				
1.07	2x10 mm ² + 1x6mm ² SC PVC copper cables drawn in 38mm dia. Cable from Main Cable Loop in Box to Consumer Unit.	20	LM.	1400	28000
	Sub total carried forward to collection page.				291350

ITEM	DESCRIPTION	QTY	UNIT	RATE	AMOUNT
	Supply and install, test and the following				
	<u>DISTRIBUTION BOARD.</u>				
2.01	4 ways, 100 Amps, TPN Flush mounted Consumer Unit complete with 100 Amps Integral SPN switch with a hinged cover as Crabtree or approved equivalent.	1	NO.	45000	45000
2.02	Mchs for item 2.01				
	a) 10 Amps, SP	5	NO.	900	4500
	b) 30 Amps, SP	1	NO.	900	900
	b) 60 Amps, SP	1	NO.	1200	1200
	c) blanking plates.	5	NO.	200	1000
2.03	Supply and install 2x100 mm sq armoured underground cables 600/1000V. (Real measurement to be taken on site).	50	LM	2500	125000
2.04	Trenching, tilling and back filling	45	LM	400	18000
2.05	Electrical earthing comprising 6.0mmsq single core copper cables drawn inside HG conduits with 1500mm by 15mm diameter copper electrode c/w clamp and pre-cast concrete pit with cover.	1	NO.	10000	10000
2.06	Supply and install Cable loop in Box using gauge 14 sheet. Double cut out	1	NO.	10000	10000
2.07	Supply and install Double cut out	1	NO.	1200	1200
2.08	Supply and install Single cut out	2	NO.	1200	2400
2.09	Testing and Commissioning	Item	Item	20000	20000
Sub total carried forward to collection page.					239200
<u>COLLECTION PAGE.</u>					
2.10	Totals from page E/1				
2.11	Totals from above.				291350
TOTALS CARRIED TO SUMMARY PAGE.					239200
					530550

ITEM	DESCRIPTION	QTY	UNIT	RATE	AMOUNT
	Supply and install, test and the following				
B	FIRST FLOOR 4NO. CLASSROOMS				
	LIGHTING POINTS.				
3.01	Lighting points wired with 3x1.5mm ² single core PVC copper cables drawn in concealed 20mm dia HG PVC conduit for :-				
	a) one way switching.	46	NO.	2400	110400
	b) two way switching	4	NO.	2800	11200
	SWITCHES.				
02	10 Amps, moulded plate flush mounted switches with screw covers, as CLIPSAL, BG or approved equivalent being :-				
	a) 1 gang 1 way.	4	NO.	300	1200
	b) 1 gang 2 way.	2	NO.	350	700
	c) 3 gang 1 way	4	NO.	450	1800
	d) Intermediate Switch.	1	NO.	450	450
	LIGHTING FITTINGS.				
3	Lighting fittings complete with lamps and all other necessary accessories.				
	a) 1200mm, 1x 36 Watts batten fluorescent fitting as THORN or philips or approved equivalent.	44	NO.	2000	88000
	b) 1500mm 1x58W with angle reflector.	3	NO.	4500	13500
	POWER POINTS.				
	13 Amps Power points wired ring comprising of 3x2.5 mm sq. single core PVC copper cables drawn in concealed 25mm HG PVC conduits.	7	NO.	3500	24500
	13 Amps. Moulded plate switched socket outlet with neon indicator as BG, CLIPSAL or approved equivalent being :-				
	a) Twin	7	NO.	800	5600
	SUB-MAIN CIRCUIT				
	10 mm ² + 1x6mm ² SC PVC copper cables drawn in 38mm dia. Cable from Main Cable	30	LM.	1400	42000
	Sub total carried forward to collection page.				299350

ITEM	DESCRIPTION	QTY	UNIT	RATE	AMOUNT
	Supply and install, test and the following				
	<u>DISTRIBUTION BOARD.</u>				
4 01	6 ways, 100 Amps, SPN Flush mounted Consumer Unit complete with 100 Amps Integral SPN switch with a hinged cover as Crabtree or approved equivalent.	1	NO	10000	10000
4 02	Mcbs for item 4 01				
	a) 10 Amps, SP	4	NO	900	3600
	b) 30 Amps, SP	1	NO	900	900
	c) blanking plates	1	NO	200	200
4 03	Testing and Commissioning	Item	Item	20000	20000
Sub total carried forward to collection page.					34700
	<u>COLLECTION PAGE.</u>				
4 04	Totals from page E/3				299350
4 05	Totals from above.				34700
TOTALS CARRIED TO SUMMARY PAGE.					334050
	<u>SUMMARY PAGE.</u>				
4 06	TOTALS FOR GROUND FLOOR				530550
4 07	TOTALS FOR FIRST FLOOR				334050
TOTALS CARRIED TO GRAND SUMMARY PAGE.					864600

DESCRIPTION	QTY	UNIT	RATE	KSHS
P.C. AND PROVISIONAL SUMS				
Allow a provisional sum of Kenya shillings One Million (Kshs 1,000,000) Only for contingencies				1,000,000
TOTAL FOR P.C & PROVISIONAL SUMS CARRIED TO GRAND SUMMARY				1,000,000

GRAND SUMMARY

DESCRIPTION	PAGE NO.	For Official Use only	For Tenderer's use only
A Bill No. 1 Preliminaries	PP/8		1,000,000
B Bill No. 2 Builder's Works	M 18		18,333,930
C Bill No. 3 Electrical Works	4		864,600
D Bill No. 4 Prime cost and Provisional sums Pc 1			1,000,000
TOTAL FOR THE PROPOSED 6NO. CLASSROOMS CUM ADMINISTRATION BLOCK CARRIED TO FORM OF TENDER: KSHS			21,198,530

Amount in words: Kenya Shillings

Tenderer's Signature

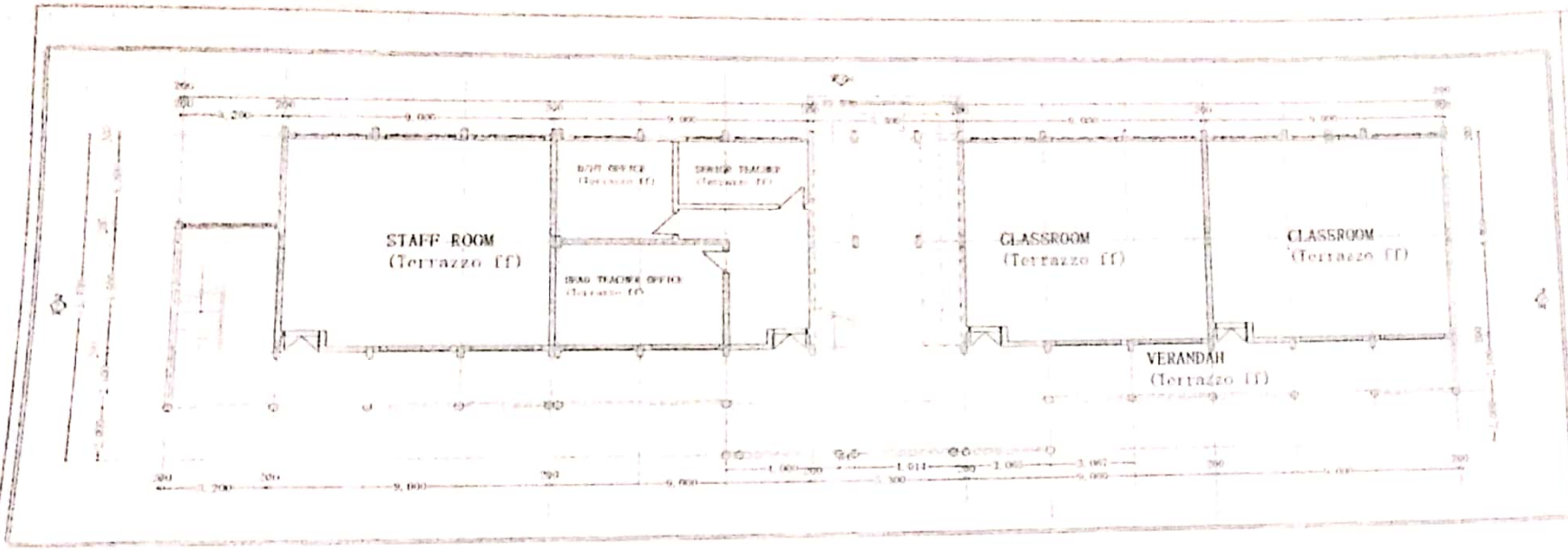
Address

Date

Witness Signature

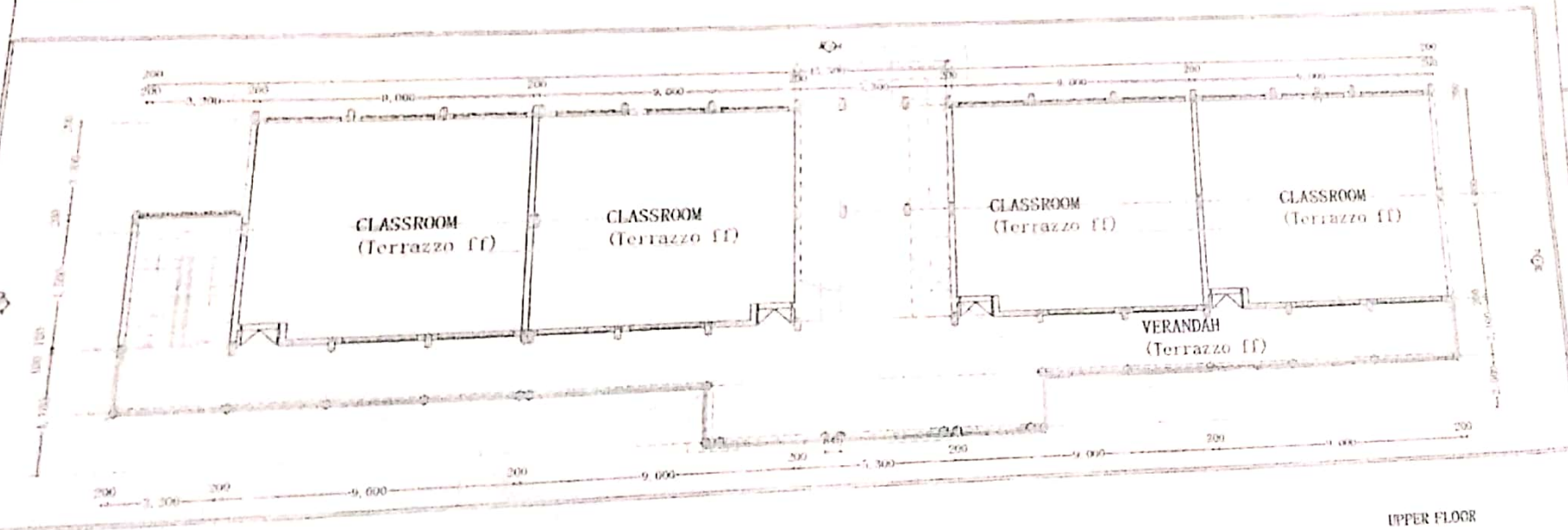
Address

Date



GROUND FLOOR

SCALE: 100



UPPER FLOOR

SCALE: 100

Project title
 PROPOSED ERECTION AND COMPLETION OF
 TEACHERS BLOCK AT ISIAA PRIMARY SCHOOL

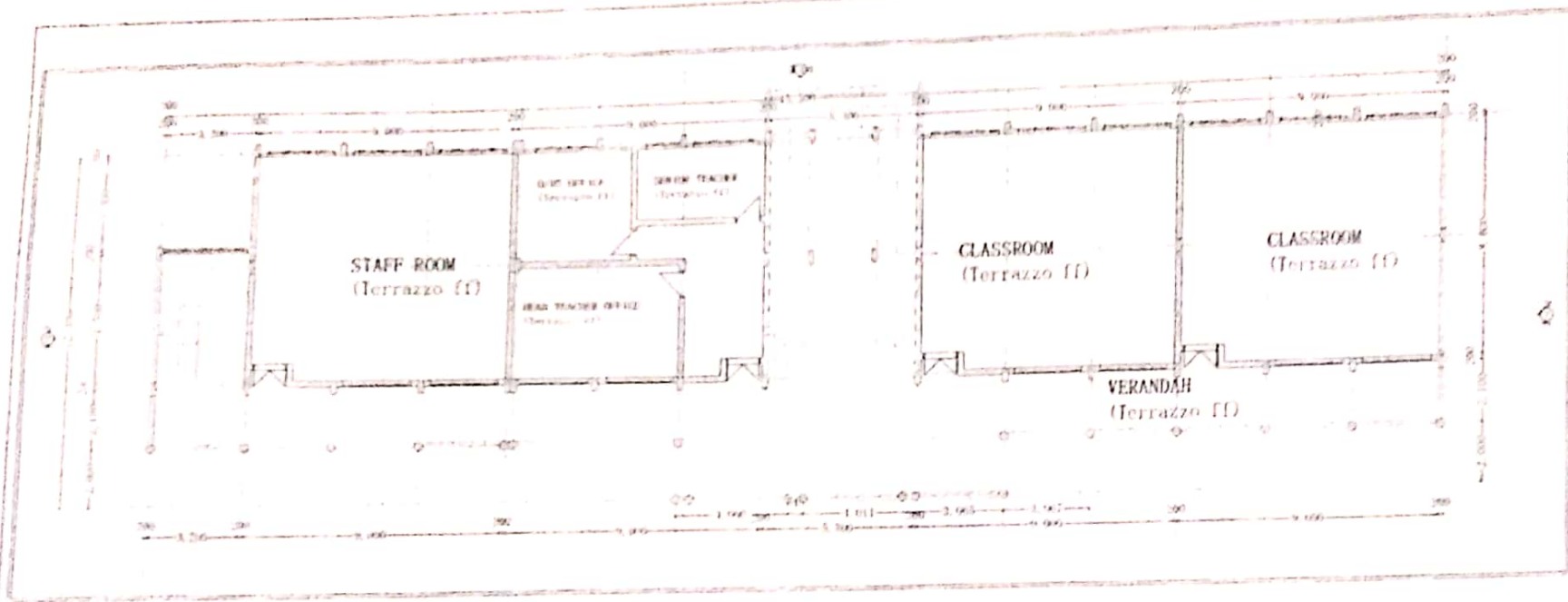
Drawing title
**FLOOR PLAN
 ELEVATIONS**

Client: Ministry department

Client signature

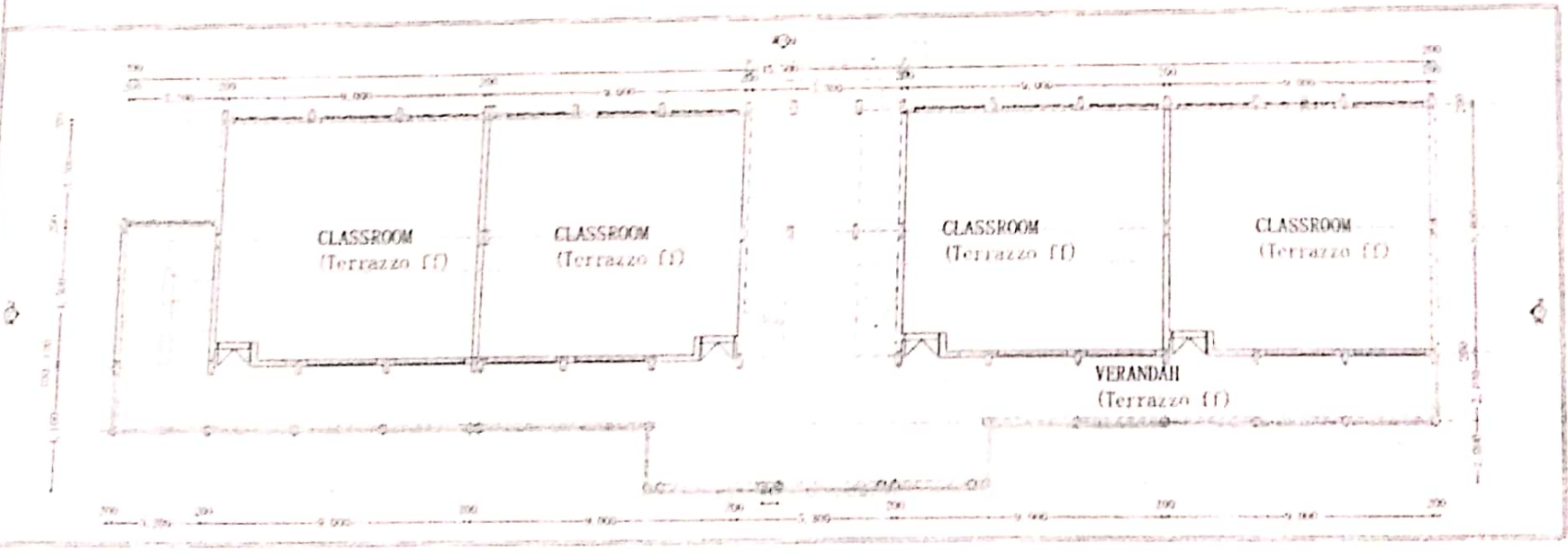
Scale	Project job no	Drawing
Drawn	Name	Design
Checked	Name	Design
Checked	Name	Design

MINISTRY OF ROADS,
 INFRASTRUCTURE, TRANSPORT
 AND PUBLIC WORKS.
 ARCHITECTURAL DEPARTMENT
 BUNGOMA COUNTY WORKS OFFICE
 P.O. BOX 291 BUNGOMA



SCALE: 100

GROUND FLOOR



SCALE: 100

UPPER FLOOR

Project title:
 PROVIDED FURNITURE AND CONNECTION OF
 TUITION BLOCK AT G. ANJANA PRIMARY
 SCHOOL

Drawing title:
**FLOOR PLAN
 ELEVATIONS**

Client ministry/ department:

Client signature:

Scale:
 Project job no. Drawing no.

Drawn	Name	Design	Sign	Date

MINISTRY OF ROADS,
 INFRASTRUCTURE, TRANSPORT
 AND PUBLIC WORKS
 ARCHITECTURAL DEPARTMENT
 BUNZAMA CERTINITY WORKS OFFICE